

PRODUCT GUIDE



DESIGNED IN USA



AMERICAN
ROAD STAR
TIRES

American Road Star Tires is a innovative brand made with the highest technology to bring you the best quality at the most affordable price. These tires offer superior performance, precision, handling, braking grip, comfort and durability, along with low noise level. American Road Star tire is dedicated to delivering improved savings and operational efficiencies, while reducing environmental impact. These tires are built with your needs and safety in mind and ready to adapt when those needs change.



CONTENTS

Passenger Tires

American Road Star Sport A/S	_____	page 4
American Road Star Pro A/S	_____	page 10
NEW American Road Star Run Flat	_____	page 12
American Road Star HP A/S	_____	page 17

Light Truck Tires

American Road Star H/T	_____	page 14
American Road Star VAN	_____	page 20
American Road Star A/T	_____	page 22
American Road Star M/T	_____	page 24
American Road Star R/T	_____	page 26

NEW American Road Star S/T	_____	page 30-31
SEMI-STEEL - FULL-STEEL		

Commercial (TBR) Tires

 • STEER/ALL-POSITION - SMART WAY		
ARS 1000 - ARS 1100	_____	page 34
 • REGIONAL CLOSED-SHOULDER DRIVE - SMART WAY		
ARS 2000 - ARS 2200	_____	page 36
• REGIONAL OPEN-SHOULDER DRIVE		
ARS 3000	_____	page 38
• TRAILER		
ARS 4000	_____	page 40
• ON-OFF ROAD / MIXED-SERVICE		
ARS 5000	_____	page 42
• REGIONAL PICK-UP/DELIVERY		
ARS 6000	_____	page 44

LIMITED TIRE WARRANTY PLAN

American Road Star	_____	page 46
Tire Limited Warranty Plan		



**UHP All Season
Ultra High Performance**

**AMERICAN
ROADSTAR SPORT A/S**



- Sizes - 14, 15, 16, 17, 18, 19, 20 & 22" Rim Diameter 25, 30, 35, 40, 45, 50, 55 & 60 Series Aspect Ratio
- 500 U.T.Q.G.
- 10/32 Tread Depth
- Jointless Nylon Band Spiral wound for uniformity Increases strength in the high stress shoulder area.
- 2 Wide Steel Belts Strengthen the overall tread area. Provides stability, excellent wear character & long mileage.



SPORT A/S

Wheel Dia.	TIRE SIZE	LI / SR	PLY	AMERICAN STANDARD FOR THE RIM	REC RIM (MEASURING RIM) WIDTH (in.)	MAX LOAD (lbs)	MAX PSI	UTQG
14"	185/60R14	82H	-	5.0-5.5-6.5	5 1/2J	1047	44	500 A A
15"	185/55R15	82V	-	5.0-6.0-6.5	6J	1047	44	500 A A
	195/50R15	82V	-	5.5-6.0-7.0	6J	1047	44	500 A A
15"	195/55R15	85V	-	5.5-6.0-7.0	6J	1135	44	500 A A
	NEW 185/55R16	87V	-	5.0-6.0-6.5	6J	1201	49	500 A A
16"	195/50ZR16	84W	-	5.5-6-6.5	6	1102	44	500 A A
	195/55ZR16	91W	-	5.5-6.0-7.0	6J	1356	49	500 A A
	205/45ZR16	87W	-	6.5-7.0-7.5	7J	1201	49	500 A A
	205/50ZR16	87W	-	5.5-6.5-7.5	6 1/2J	1201	44	500 A A
	205/55ZR16	94W	-	5.5-6.5-7.5	6 1/2J	1477	49	500 A A
	215/55ZR16	97W	-	6.0-7.0-7.5	7 J	1609	49	500 A A
17"	225/55ZR16	95W	-	6.0-7.0-8.0	7J	1521	44	500 A A
	205/40ZR17	84W	-	-	7 1/2J	1102	49	500 A A
	205/45ZR17	88W	-	-	7J	1235	49	500 A A
	205/50ZR17	93W	-	5.5-6.5-7.5	6 1/2J	1433	49	500 A A
	205/55R17	95V	-	-	6 1/2J	1521	49	500 A A
	215/45ZR17	91W	-	7.0-8.0	7J	1356	49	500 A A
	215/50ZR17	95W	-	6.0-7.0-7.5	7J	1521	49	500 A A
	215/55ZR17	98W	-	6.0-7.0-7.5	7J	1653	49	500 A A
	225/45ZR17	94Y	-	7.0-7.5-8.5	7 1/2J	1477	49	500 A A
	225/50ZR17	98W	-	6.0-7.0-8.0	7J	1653	49	500 A A
	225/55ZR17	101W	-	6.0-7.0-8.0	7J	1819	49	500 A A
	235/45ZR17	97W	-	7.5-8.0-9.0	8J	1609	49	500 A A
	235/50ZR17	100W	-	6.5-7.5-8.5	7 1/2J	1764	49	500 A A
	235/55ZR17	103W	-	6.5-7.5-8.5	7 1/2J	1929	49	500 A A
235/60R17	102H	-	6.5-7.0-8.5	7J	1874	44	500 A A	
245/40ZR17	95W	-	8.0-8.5-9.5	8 1/2J	1521	49	500 A A	
245/45ZR17	99W	-	7.5-8.0-9.0	8J	1709	49	500 A A	
18"	NEW 215/35ZR18	84W XL	-	7-7.5-8	7 1/2	1102	49	500 A A
	215/40ZR18	89W	-	7.0-7.5-8.5	7 1/2 J	1279	49	500 A A
	215/45ZR18	89W	-	7.0-8.0	7J	1279	44	500 A A
	215/55R18	95V	-	6.0-7.0-7.5	7J	1521	44	500 A A
	225/40ZR18	92W	-	7.5-8.0-9.0	8J	1389	49	500 A A
	225/45ZR18	95W	-	7.0-7.5-8.5	7 1/2J	1521	49	500 A A
	225/50ZR18	99W	-	6.0-7.0-8.0	7J	1709	49	500 A A
	225/55R18	102V	-	6.0-7.0-8.0	7J	2271	49	500 A A
	235/40ZR18	95W	-	8.0-8.5-9.5	8 1/2J	1521	49	500 A A
	235/45ZR18	98W	-	7.5-8.0-9.0	8J	1653	49	500 A A

SPORT A/S

**UHP All Season
Ultra High Performance**

**AMERICAN
ROADSTAR SPORT A/S**

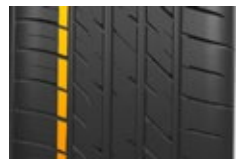


PATTERN INTRODUCTIONS

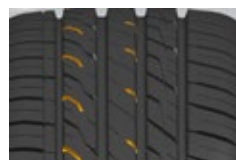
OUTSIDE INSIDE



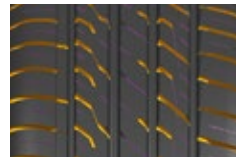
1. 4 wide longitudinal grooves provide good water evacuation for excellent handling performance on wet roads.



2. Outside Anti Eccentric wear block design Anti eccentric wear blocks on outer shoulder can increase the tread contact area at braking to obtain uniform contact pressure, which can avoid eccentric wear.



3. Partial Slanted Grooves interrupt air flow across the tread to decrease noise. Partial slanted grooves also can provide stability during cornering



4. Wide Grooves and fine sipes cut through water film to provide wet traction, and greatly reduce noise, providing a comfortable driving experience.



5. Silent pitch variation and sequence design Optimization of pitch width and sequence effectively reduce the noise resonance, resulting in a quieter ride.

SPORT A/S

Wheel Dia.	TIRE SIZE	LI / SR	PLY	AMERICAN STANDARD FOR THE RIM	REC RIM (MEASURING RIM) WIDTH (in.)	MAX LOAD (lbs)	MAX PSI	UTQG
18"	235/50ZR18	101W	-	6.5-7.5-8.5	7 1/2J	1819	49	500 A A
	245/40ZR18	97W	-	8.0-8.5-9.5	8 1/2J	1609	49	500 A A
	245/45ZR18	100Y	-	7.5-8.0-9.0	8J	1764	49	500 A A
	245/50ZR18	100W	-	7.0-7.5-8.5	7 1/2J	1764	44	500 A A
	245/55ZR18	103W	-	7.0-7.5-8.5	7 1/2J	1929	44	500 A A
	255/35ZR18	94W	-	8.5-9.0-10.0	9 J	1477	49	500 A A
	255/40ZR18	99W	-	8.5-9.0-10.0	9J	1709	49	500 A A
	255/55ZR18	109W	-	7.0-8.0-9.0	8J	2271	49	500 A A
	NEW 255/60R18	112V XL	-	7-7.5-8	7 1/2	2469	49	500 A A
	NEW 265/35ZR18	97W	-	9.0-9.5-10.5	9 1/2 J	1609	49	500 A A
NEW 275/40ZR18	99Y	-	9-9.5-10	9 1/2	1709	44	500 A A	
19"	225/40ZR19	93W	-	-	8J	1433	49	500 A A
	225/45ZR19	96W	-	7.0-7.5-8.5	7 1/2 J	1565	49	500 A A
	225/55R19	103V XL	-	6.0-7.0-8.0	7J	1929	50	500 A A
	235/35ZR19	91W	-	-	8 1/2J	1356	49	500 A A
	235/40ZR19	96W	-	8.0-8.5-9.5	8 1/2J	1565	49	500 A A
	235/45ZR19	99W	-	7.5-8.0-9.0	8J	1709	49	500 A A
	235/50ZR19	103W	-	6.5-7.5-8.5	7 1/2J	1929	49	500 A A
	235/55R19	105V	-	6.5-7.5-8.5	7 1/2J	2039	49	500 A A
	NEW 235/65R19	109V XL	-	6.5-7-7.5	7	2271	49	500 A A
	245/35ZR19	97W	-	8.0-8.5-9.5	8 1/2J	1609	49	500 A A
	245/40ZR19	98Y	-	8.0-8.5-9.5	8 1/2J	1653	49	500 A A
	245/45ZR19	102W	-	7.5-8.0-9.0	8 J	1874	49	500 A A
	245/50ZR19	105W XL	-	7.0-7.5-8.5	7 1/2J	2039	50	500 A A
	245/55ZR19	103W	-	7.0-7.5-8.5	7 1/2J	1929	44	500 A A
	255/35ZR19	96W	-	-	9J	1565	49	500 A A
	255/40ZR19	100W	-	8.5-9.0-10.0	9J	1764	49	500 A A
	255/45ZR19	104W	-	8.0-8.5-9.5	8 1/2J	1984	49	500 A A
	255/55ZR19	111W	-	-	8J	2403	49	500 A A
	265/30ZR19	93W	-	-	9 1/2J	1433	49	500 A A
	265/35ZR19	98Y XL	-	-	9 1/2J	1653	50	500 A A
265/50ZR19	110W XL	-	-	8 1/2J	2337	49	500 A A	
275/30ZR19	96W	-	9.0-9.5-10.0	9 1/2J	1565	49	500 A A	
275/35ZR19	100W	-	-	9 1/2J	1764	49	500 A A	
275/40ZR19	101Y	-	9.0-9.5-11.0	9 1/2J	1819	44	500 A A	
NEW 275/45ZR19	108W XL	-	8.5-9-9.5	9	2205	49	500 A A	
NEW 275/55R19	111V	-	-	8 1/2J	2403	44	500 A A	
20"	225/35ZR20	93W	-	7.5-8.0-9.0	8J	1433	49	500 A A

SPORT A/S

SPORT A/S

Wheel Dia.	TIRE SIZE	LI / SR	PLY	AMERICAN STANDARD FOR THE RIM	REC RIM (MEASURING RIM) WIDTH (in.)	MAX LOAD (lbs)	MAX PSI	UTQG
20"	235/35ZR20	92Y XL	-	-	8 1/2J	1389	50	500 A A
	235/45ZR20	100W XL	-	7.5-8.0-9.0	8J	1764	50	500 A A
	235/50ZR20	104W XL	-	-	7 1/2J	1984	50	500 A A
	235/55ZR20	102W	-	6.5-7.5-8.5	7 1/2J	1874	44	500 A A
	245/35ZR20	95W	-	-	8 1/2J	1521	49	500 A A
	245/40ZR20	99Y	-	8.0-8.5-9.5	8 1/2J	1709	49	500 A A
	245/45ZR20	103W	-	7.5-8.0-9.0	8J	1929	49	500 A A
	255/35ZR20	97W	-	8.5-9.0-10.0	9 J	1609	49	500 A A
	NEW 255/40ZR20	101W XL	-	8.5-9-9.5	9	1819	49	500 A A
	255/45ZR20	105W	-	8.0-8.5-9.5	8 1/2J	2039	49	500 A A
	255/50R20	109V	-	7.0-8.0-9.0	8 J	2271	49	500 A A
	255/55R20	110H	-	7.0-8.0-9.0	8J	2337	49	500 A A
	NEW 265/35ZR20	99Y XL	-	9-9.5-10	9 1/2	1709	49	500 A A
	265/45ZR20	108W	-	-	9 J	2205	49	500 A A
	265/50R20	111V	-	7.5-8.5-9.5	8 1/2J	2403	49	500 A A
	275/30ZR20	97W	-	9.0-9.5-10.0	9 1/2J	1609	49	500 A A
	275/35ZR20	102W	-	9.0-9.5-11.0	9 1/2J	1874	49	500 A A
	275/40ZR20	106W	-	9.0-9.5-11.0	9 1/2 J	2094	49	500 A A
275/50ZR20	113Y XL	-	-	8 1/2J	2535	50	500 A A	
285/30ZR20	99Y XL	-	9.5-10.0-10.5	10J	1709	50	500AA	
285/35ZR20	104W XL	-	9.5-10.0-11.0	10J	1984	49	500 A A	
295/40ZR20	110W XL	-	10.0-10.5-11.5	10 1/2J	2337	49	500 A A	
NEW 295/45ZR20	114Y XL	-	9.5-10-10.5	10	2601	49	500 A A	
305/30ZR20	103W XL	-	7.0-8.5-9.0	11 J	1929	49	500 A A	
NEW 305/35ZR20	107Y XL	-	10.5-11-11.5	11	2149	49	500 A A	
315/35ZR20	110W	-	10.5-11.0-12.5	11 J	2337	49	500 A A	
21"	NEW 245/35ZR21	96Y XL	-	-	8 1/2J	1565	50	500 A A
	NEW 255/35ZR21	98Y XL	-	8.5-9-9.5	9	1653	49	500 A A
	NEW 255/40ZR21	105Y XL	-	8.5-9-9.5	9	2039	49	500 A A
	265/35ZR21	101Y XL	-	-	9 1/2J	1819	50	500 A A
	265/40ZR21	105Y XL	-	-	9 1/2J	2039	50	500 A A
	NEW 265/45ZR21	108Y XL	-	8.5-9-9.5	9	2205	49	500 A A
	275/35ZR21	103Y XL	-	-	9 1/2J	1929	50	500 A A
	275/40ZR21	109Y XL	-	-	9 1/2J	2271	50	500 A A
	275/45ZR21	110Y XL	-	-	9J	2337	50	500 A A
	NEW 275/50ZR21	113Y XL	-	8-8.5-9	8 1/2	2335	49	500 A A
	NEW 285/30ZR21	100Y XL	-	9.5-10-10.5	10	1764	49	500 A A
	285/35ZR21	108Y XL	-	-	10J	2205	50	500 A A
285/40ZR21	109Y XL	-	-	10J	2271	50	500 A A	
285/45ZR21	113W XL	-	-	9 1/2J	2535	50	500 A A	

SPORT A/S

Wheel Dia.	TIRE SIZE	LI / SR	PLY	AMERICAN STANDARD FOR THE RIM	REC RIM (MEASURING RIM) WIDTH (in.)	MAX LOAD (lbs)	MAX PSI	UTQG
21"	295/35ZR21	107Y XL	-	-	10 1/2J	2149	50	500 A A
	295/40ZR21	111Y XL	-	-	10 1/2J	2403	50	500 A A
	315/30ZR21	105Y XL	-	-	11J	2039	50	500 A A
	315/35ZR21	111Y XL	-	-	11J	2403	50	500 A A
	315/40ZR21	111Y	-	-	11J	2403	44	500 A A
	325/30ZR21	110Y XL	-	-	11 1/2J	2337	50	500 A A
	NEW 225/30RZ22	89W XL	-	7.5-8-8.5	8	1201	49	500 A A
NEW 255/30ZR22	95W	-	-	9 J	1521	49	500 A A	
NEW 265/30ZR22	97W XL	-	9-9.5-10	9 1/2	1609	49	500 A A	
265/35ZR22	102W XL	-	-	9 1/2J	1874	49	500 A A	
275/35ZR22	107Y XL	-	-	9 1/2J	2149	50	500 A A	
275/40ZR22	108Y XL	-	-	9 1/2J	2205	50	500 A A	
275/50R22	115H XL	-	7.5-8.5-9.5	8 1/2J	2679	50	500 A A	
22"	285/35ZR22	106W	-	-	10J	2094	49	500 A A
	285/40ZR22	110Y XL	-	-	10J	2337	50	500 A A
	NEW 295/25ZR22	97Y XL	-	10-10.5-11	10 1/2	1609	49	500 A A
	295/30ZR22	110Y XL	-	-	10 1/2J	2337	50	500 A A
	NEW 305/25ZR22	103Y XL	-	10.5-11-11.5	11	1709	49	500 A A
	NEW 305/45R22	118V XL	-	9.5-10-10.5	10	2910	49	500 A A
	NEW 315/25ZR22	101Y XL	-	11-11.5-12	11 1/2	1819	49	500AA
	315/30ZR22	107Y XL	-	-	11J	2149	50	500 A A
	315/35ZR22	111Y XL	-	-	11J	2403	50	500 A A
	NEW 325/40ZR22	114W	-	11-11.5-12	11 1/2	2601	44	500 A A
23"	285/35ZR23	107Y	-	COMING SOON				
	285/40ZR23	107Y	-	COMING SOON				
	325/30ZR23	109Y	-	COMING SOON				
	325/35ZR23	111Y	-	COMING SOON				
24"	NEW 245/30ZR24	94W XL	-	8-8.5-9	8 1/2	1477	49	500 A A
	NEW 255/25ZR24	95W XL	-	8.5-9-9.5	9	1521	49	500 A A
	NEW 255/30ZR24	97W XL	-	8.5-9-9.5	9	1609	49	500 A A
	NEW 275/25ZR24	96W XL	-	9.5-10-10.5	10	1565	49	500 A A
	NEW 285/30ZR24	103W XL	-	9.5-10-10.5	10	1929	49	500 A A
	NEW 285/35ZR24	108W XL	-	9.5-10-10.5	10	2205	49	500 A A
	NEW 285/40R24	112V XL	-	9.5-10-10.5	10	2469	49	500 A A
	NEW 295/30ZR24	104Y XL	-	10-10.5-11	10 1/2	1984	49	500 A A
26"	NEW 295/35R24	110V XL	-	10-10.5-11	10 1/2	2337	49	500 A A
	NEW 305/30ZR24	107W XL	-	10.5-11-11.5	11	2149	49	500 A A
	NEW 275/25ZR26	98W XL	-	9.5-10-10.5	10	1653	49	500 A A
	NEW 295/25ZR26	102W XL	-	10-10.5-11	10 1/2	1874	49	500 A A

Tire sizes, technical data and product availability are subject to change. Please see americanroadstar.com for the most up-to-date information.

TOURING
All-Season Tires

AMERICAN ROADSTAR PRO A/S



- Sizes - 14, 15, 16, 17 & 18" Rim Diameters 60, 65 & 70 Series Aspect Ratio
- 500 U.T.Q.G.
- 10/32 Tread Depth

- Uniquely Wide Flat Tread Radius
- Produces excellent steering progression and ride comfort.
- Jointless Nylon Band
- Increases strength in the high stress shoulder area.
- 2 Wide Steel Belts
- Strengthen the overall tread area.
- Provides stability, excellent wear character & long mileage.
- 9 more sizes on the way



PRO A/S

Wheel Dia.	TIRE SIZE	LI / SR	PLY	AMERICAN STANDARD FOR THE RIM	REC RIM (MEASURING RIM) WIDTH (in.)	MAX LOAD (lbs)	MAX PSI	UTQG
14"	*NEW 165/65R14	79H	-	4.5-5-5.5	5	963	44	500 AA
	175/65R14	82H	-	5.0-6.0	5J	1047	44	500 A A
	175/70R14	88H	-	4.5-5.0-6.0	5J	1235	49	500 A A
	185/65R14	86H	-	5.0-5.5-6.5	5 1/2J	1168	44	500 A A
	185/70R14	88H	-	4.5-5.5-6.0	5 1/2J	1235	44	500 A A
	195/70R14	91H	-	5.0-6.0-6.5	6J	1356	44	500 A A
	205/70R14	98H	-	5.0-6.0-7.0	6J	1653	49	500 A A
15"	175/65R15	84H	-	5.0-6.0	5J	1102	44	500 A A
	185/60R15	84H	-	5.0-5.5-6.5	5 1/2J	1102	44	500 A A
	185/65R15	88H	-	5.0-5.5-6.5	5 1/2J	1235	44	500 A A
	195/60R15	88H	-	5.5-6.0-7.0	6J	1235	44	500 A A
	195/65R15	91H	-	5.5-6.0-7.0	6J	1356	44	500 A A
	205/60R15	91V	-	5.5-6.0-7.5	6J	1356	44	500 A A
	205/65R15	94H	-	5.5-6.0-7.5	6J	1477	44	500 A A
	205/70R15	96H	-	5.0-6.0-7.0	6J	1565	44	500 A A
	215/65R15	100H	-	6.0-6.5-7.5	6 1/2J	1764	49	500 A A
	215/70R15	98T	-	5.5-6.5-7.0	6 1/2J	1653	44	500 A A
16"	225/70R15	100T	-	6.0-6.5-7.5	6 1/2J	1764	44	500 A A
	185/60R16	86H	-	5.0-5.5-6.5	5 1/2J	1168	44	500 A A
	205/60R16	96V	-	5.5-6.0-7.5	6J	1565	49	500 A A
	205/65R16	95V	-	5.5-6.0-7.5	6J	1521	44	500 A A
	205/70R16	97H	-	5.0-6.0-7.0	6J	1609	44	500 A A
	215/60R16	95V	-	6.0-6.5-7.5	6 1/2J	1521	44	500 A A
	215/65R16	102H	-	6.0-6.5-7.5	6 1/2J	1874	49	500 A A
	225/60R16	98H	-	6.0-6.5-8.0	6 1/2J	1653	44	500 A A
	225/65R16	100H	-	6.0-6.5-8.0	6 1/2J	1764	44	500 A A
17"	235/65R16	107H	-	6.5-7.0-8.5	7J	2149	49	500 A A
	215/60R17	100H	-	6.0-6.5-7.5	6 1/2J	1764	49	500 A A
	215/65R17	99H	-	6.0-6.5-7.5	6 1/2J	1709	44	500 A A
18"	225/60R17	99V	-	6.0-6.5-8.0	6 1/2J	1709	44	500 A A
	225/60R18	104V	-	6.0-6.5-8.0	6 1/2J	1964	49	500 A A

Tire sizes, technical data and product availability are subject to change. Please see americanroadstar.com for the most up-to-date information.



COMING SOON RUN FLAT

16"	195/55R16	17"	205/45R17
	205/55R16		205/50R17
	205/55R17		
	225/45R17		
	225/50R17		
	225/55R17		

RUN FLAT 



COMING SOON RUN FLAT

18"	205/40R18	19"	225/40R19	20"	245/35R20
	225/40R18		225/45R19		245/40R20
	225/45R18		235/45R19		245/45R20
	225/50R18		235/55R19		255/45R20
	235/50R18		245/40R19		275/30R20
	235/55R18		245/45R19		275/35R20
	235/60R18		245/50R19	275/40R20	
	245/40R18		255/35R19	275/45R20	
	245/45R18		255/50R19	315/35R20	
	245/50R18		265/50R19	275/40R21	
21"	255/35R18	275/35R19	275/45R21		
	255/40R18	275/40R19	285/35R21		
			315/35R21		
			275/40R22		
22"			315/35R22		

RUN FLAT 



- HIGH STABILITY CANTERING RIB**
The solid rib in the center of the tire ensures straight-line driving stability
- WET GRIP GROOVE DESIGN**
Four wide, longitudinal grooves channel road water, while lateral grooves work to direct it out from under the tire
- LOW TREAD WEAR SHOULDER DESIGN**
The shoulder is integrated with heat-resisting bars to keep the tread blocks stable and protect them from irregular wear. For the same reason, the design also improves high-speed cornering stability
- FUEL-SAVING TREAD COMPOUND**
The American Roadstar Run Flat advanced tread compound reduces rolling resistance, which helps boost fuel efficiency and lower exhaust emissions
- QUIET-RIDE PITCH ALIGNMENT**
Optimized tread pitch width and alignment for quiet resonance and reduced road noise

RUN FLAT 



- OPTIMIZED TREAD DESIGN**
Our computer-aided design has optimized the tread pitch and alignment which reduces road noise levels at higher speeds
- WET-GRIP SIPES AND GROOVES**
Added sipes and grooves improve aquaplaning resistance and provide better handling on wet roads
- DRY GRIP**
Tread design creates a much larger contact area allowing better stability, cornering and control
- ADVANCED TREAD COMPOUND**
Advanced silica tread compound boosts rolling resistance and helps improve fuel efficiency
- LATERAL AND LONGITUDINAL GROOVES**
Deliver smooth handling and better control on dry and wet roads

RUN FLAT 

Additional Sizes Coming Soon!

ALL-SEASON TOURING S.U.V. & Crossover H/T Tires



- S.U.V. Sizes - 15, 16, 17, 18, 19 & 20" Rim Diameters 55, 60, 65, 70 & 75 Series Aspect Ratio
- 600 U.T.Q.G.
- 10, 11 & 13/32 Tread Depth
- Uniquely Wide & Flat Tread Radius Produces excellent steering progression and ride comfort.
- High Rubber to void ratio with variable shaped tread block elements. Produces great wear character and long mileage. Tread block noise is cancelled out creating sound comfort.
- Jointless Nylon Band Spiral wound for uniformity Increases strength in the high stress shoulder area.
- 2 Wide Steel Belts Strengthen the overall tread area. Provides stability, excellent wear character & long mileage.
- More sizes on the way



H/T

Wheel Dia.	TIRE SIZE	LI / SR	PLY	AMERICAN STANDARD FOR THE RIM	REC RIM (MEASURING RIM) WIDTH (in.)	MAX LOAD (lbs)	MAX PSI	UTQG	
15"	235/75R15	109T	-	6.0-6.5-8.0	6 1/2J	2271	49	600 A B	
	215/70R16	100H	-	5.5-6.5-7.0	6 1/2J	1764	44	600 A B	
	225/70R16	103T	-	6.0-6.5-7.5	6 1/2J	1929	44	600 A B	
	225/75R16	104T	-	7.5-8.5-10.0	6J	1984	44	600 A B	
	235/70R16	106H	-	6.0-7.0-8.0	7J	2094	44	600 A B	
	245/70R16	111T	-	6.5-7.0-8.0	7J	2403	49	600 A B	
	245/75R16	111T	-	6.5-7.0-8.0	7J	2403	44	600 A B	
	255/70R16	111T	-	6.5-7.5-8.5	7 1/2J	2403	44	600 A B	
	265/70R16	112H	-	7.0-8.0-9.0	8J	2469	44	600 A B	
	265/75R16	116T	-	7.0-7.5-9.0	7 1/2J	2756	44	600 A B	
16"	LT215/85R16	115/112Q	10/E	5.5-6.0-7.0	6J	2680	80	-	
	LT225/75R16	115/112S	10/E	6.0-7.5	6J	2680	80	-	
	LT235/85R16	120/116R	10/E	6.0-6.5-7.5	6 1/2J	3042	80	-	
	LT245/75R16	120/116S	10/E	6.5-7.0-8.0	7J	3042	80	-	
	LT265/75R16	123/120R	10/E	7.0-7.5-9.0	7 1/2J	3415	80	-	
	17"	225/65R17	102T	-	6.0-6.5-8.0	6 1/2J	1874	44	600 A B
		235/65R17	108H	-	6.5-7.0-8.5	7J	2205	49	600 A B
		245/65R17	107H	-	7.0-8.5	7J	2149	44	600 A B
		245/70R17	114H	-	6.5-7.0-8.0	7J	2601	49	600 A B
		255/65R17	110H	-	7.0-7.5-9.0	7 1/2J	2337	44	600 A B
255/70R17		112H	-	6.5-7.5-8.5	7 1/2J	2469	44	600 A B	
265/65R17		116H	-	7.5-8.0-9.5	8J	2756	49	600 A B	
265/70R17		115H	-	7.0-8.0-9.0	8J	2679	44	600 A B	
LT235/80R17		120/117Q	10/E	6.0-6.5-7.5	6 1/2J	3085	80	-	
LT245/70R17		119/116S	10/E	6.5-7.0-8.0	7J	2998	80	-	
18"	235/55ZR18	104W	-	6.5-7.5-8.5	7 1/2J	1984	49	600 A B	
	235/60R18	107V	-	6.5-7.0-8.5	7J	2149	49	600 A B	
	235/65R18	110H	-	6.5-7.0-8.5	7J	2337	49	600 A B	

**ALL-SEASON TOURING
S.U.V. & Crossover H/T Tires**



- S.U.V. Sizes - 15, 16, 17, 18, 19 & 20" Rim Diameters 55, 60, 65, 70 & 75 Series Aspect Ratio
- 600 U.T.Q.G.
- 10, 11 & 13/32 Tread Depth

- Uniquely Wide & Flat Tread Radius Produces excellent steering progression and ride comfort.
- High Rubber to void ratio with variable shaped tread block elements. Produces great wear character and long mileage. Tread block noise is cancelled out creating sound comfort.
- Jointless Nylon Band Spiral wound for uniformity Increases strength in the high stress shoulder area.
- 2 Wide Steel Belts Strengthen the overall tread area. Provides stability, excellent wear character & long mileage.
- More sizes on the way

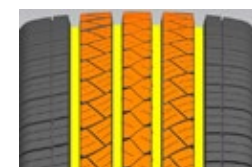


H/T

Wheel Dia.	TIRE SIZE	LI / SR	PLY	AMERICAN STANDARD FOR THE RIM	REC RIM (MEASURING RIM) WIDTH (in.)	MAX LOAD (lbs)	MAX PSI	UTQG
18"	245/60R18	105H	-	7.0-8.5	7J	2039	44	600 A B
	255/65R18	111T	-	7.0-7.5-9.0	7 1/2J	2403	44	600 A B
	255/70R18	113H	-	6.5-7.5-8.5	7 1/2J	2535	44	600 A B
	265/60R18	114V	-	7.5-8.0-9.5	8J	2601	49	600 A B
	265/65R18	114H	-	7.5-8.0-9.5	8J	2601	44	600 A B
	265/70R18	116H	-	7.0-8.0-9.0	8J	2756	44	600 A B
	275/65R18	116H	-	7.5-8.0-9.5	8J	2756	44	600 A B
	LT275/65R18	123/120S	10/E	8.0-9.5	8J	3417/3086	80	-
LT275/70R18	125/122S	10/E	7.0-8.0-9.0	8J	3638/3307	80	-	
19"	255/60R19	109H	-	-	7 1/2J	2271	44	600 A B
20" *NEW	245/50ZR20	102W	-	7.0-7.5-8.5	7 1/2J	1874	44	600 A B
	245/60R20	107H	-	7.0-8.5	7J	2149	44	600 A B
	265/60R20	112H	-	7.5-8-8.5	8	2469	44	600 A B
	275/60R20	115V	-	7.5-8.0-9.5	8J	2679	44	600 A B

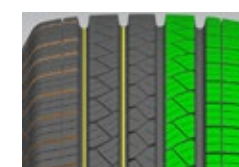
Tire sizes, technical data and product availability are subject to change. Please see americanroadstar.com for the most up-to-date information.

PATTERN INTRODUCTIONS

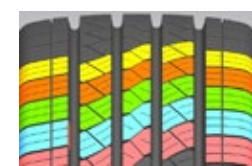


Four wide longitudinal grooves enhance water evacuation, improving cornering and handling performance on wet roads.

3 directional continuous center ribs ensure straight driving stability. Cross-interlocking groove design provides reliable grip and reduces noise. Sharp edges of the lateral grooves cut through water film effectively, and resist hydroplaning of the tire.



Optimized depth of main grooves ensure high mileage. Optimal ratio of tread rib ensures efficient ground contact area while ensuring tire load carrying capacity. Depth of the shoulder grooves design, effectively reduce the tire heat, providing a reliable load durability.



Optimization of 5 variable pitch sequence, effectively reduces the noise resonance, improving comfort. Optimized pitch width, effectively improves the load carrying capacity while reducing noise.

**UHP All-Season
Ultra High Performance**

**AMERICAN
ROADSTAR HP A/S**



- S.U.V. Sizes - 19, 20, 22, 24 & 26" Rim Diameters 30, 35, 40, 45, 50, & 55 Series Aspect Ratio
- 500 U.T.Q.G.
- 10/32 Tread Depth
- Uniquely Wide & Flat Tread Radius Produces excellent steering progression and ride comfort.
- Aggressive "Grown-Up" tread design. Produces great traction for all weather and road surfaces. Tightly packed shoulder blocks are quiet and wear evenly.
- Jointless Nylon Band Spiral wound for uniformity Increases strength in the high stress shoulder area.
- 2 Wide Steel Belts Strengthen the overall tread area. Provides stability, excellent wear character & long mileage.



HP A/S

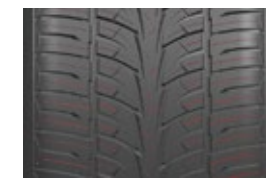
Wheel Dia.	TIRE SIZE	LI / SR	PLY	AMERICAN STANDARD FOR THE RIM	REC RIM (MEASURING RIM) WIDTH (in.)	MAX LOAD (lbs)	MAX PSI	UTQG
19"	255/50ZR19	107Y	-	7.0-8.0-9.0	8J	2149	49	500 A A
20"	275/45R20	110V	-	8.5-9.0-10.5	9J	2337	49	500 A A
	275/55R20	117V	-	7.5-8.5-9.5	8 1/2J	2833	49	500 A A
22"	235/30ZR22	90W	-	-	8 1/2J	1323	49	500 A A
	245/30ZR22	95W	-	-	8 1/2J	1521	49	500 A A
	265/35ZR22	102W	-	9.0-9.5-10.5	9 1/2J	1874	49	500 A A
	265/40ZR22	106W	-	-	9 1/2J	2094	49	500 A A
	285/45R22	114V	-	9.0-9.5-10.5	9 1/2 J	2601	49	500 A A
24"	305/40R22	114V	-	10.0-11.0-12.0	11J	2601	49	500 A A
	295/35ZR24	110W	-	-	10 1/2J	2337	49	500 A A
	305/35R24	112V	-	10.0-11.0-12.0	11J	2469	49	500 A A
26"	295/30ZR26	107W	-	-	10 1/2 J	2149	49	500 A A
	305/30R26	109V	-	-	11J	2271	49	500 A A

Tire sizes, technical data and product availability are subject to change. Please see americanroadstar.com for the most up-to-date information.

PATTERN INTRODUCTIONS



Central longitudinal continuous main rib, provides straight driving stability and high speed controllability ensuring safety. Twin longitudinal main grooves with 3D groove walls are effective in preventing hydroplaning on wet roads, and reduce noise. Continuous blocks ensure efficient ground contact area, providing extreme control and stability.



Zig Zag grooves, cross grooves and sipes improve the all-weather performance of the tire.



With the advanced design concept silica compound and 3D sips distribution ULTRA SPORT A/S provides reliable grip and excellent braking performance in wet and dry conditions.



Optimization of variable random pitch sequence, minimizes noise generation contributing a quiet and comfortable ride.

HIGHWAY-COMMERCIAL
All-Season Tires



- Symmetrical/Non-Directional Commercial Hwy A/S
- Speed Ratings – Q, R – 6 PR
- 65-75 Series, 16 in. rim size

- 4 Wide Circumferential Ribs for outstanding strength and load support
- 3 Zigzag Circumferential grooves for water evacuation and all-season traction.
- Made in Thailand
- Designed for drivers of commercial pick-up trucks and vans for rugged all-season commercial use



VAN

Wheel Dia.	TIRE SIZE	LI / SR	PLY	AMERICAN STANDARD FOR THE RIM	REC RIM (MEASURING RIM) WIDTH (in.)	MAX LOAD (lbs)	MAX PSI	UTQG
15" NEW	185/60R15C	94/92T	6PR	5-5.5-6	5 1/2	1477	55	-
16"	195/75R16C	110/108R	10/E	-	5 1/2J	2335	77	-
	235/65R16C	121/119R	10/E	-	7J	3195	83	-
	285/65R16C	COMING SOON						

Tire sizes, technical data and product availability are subject to change. Please see americanroadstar.com for the most up-to-date information.



**ALL-TERRAIN
A/T Tires**



- SUV Metric Sizes - LT Metric & High Float Sizes 15, 16, 17, 18, 20 & 22" Rim Diameters
- 40, 45, 55, 60, 70 & 75 Series Aspect Ratios
- 12, 13, 15, 16 & 17/32 Tread Depth
- Super Wide & Flat Tread Radius Produces excellent steering progression and ride comfort.
- Attractive Marked Tread Design Produces great traction for all weather and road surfaces. Wrap around shoulder elements are profound and functional.
- Jointless Nylon Band Spiral wound for uniformity Increases strength in the high stress shoulder area.
- 2 Wide Steel Belts Strengthen the overall tread area. Provides stability, excellent wear character & long mileage.



PATTERN INTRODUCTIONS



- **Strong Pattern Block Design**
Strong central pattern blocks ensure stable handling performance and powerful control force under off-road conditions. Rugged blocks can prevent cutting, scratching and impact damage.
- **Solid Square Shoulder**
Strong shoulder provide adequate dry traction and turning performance.



- **Excellent Drainage Performance**
Four wide longitudinal grooves can evacuate water effectively, enhance handling and steering on wet road surface .
- **Special Multi-Angle Sipe Design**
Irregular sipes design can reduce noise and improve grip on snow-covered roads effectively, to ensure excellent control performance.

A/T

Wheel Dia.	TIRE SIZE	LI / SR	PLY	AMERICAN STANDARD FOR THE RIM	REC RIM (MEASURING RIM) WIDTH (in.)	MAX LOAD (lbs)	MAX PSI	UTQG	
15"	31x10.50R15LT	109S	6PR-LRC	7.0-8.5-9.0	8 1/2J	2270	50	-	
16"	265/70R16	112T	-	7.0-8.0-9.0	8J	2469	44	500AA	
	LT245/75R16	120/116R	10PR-LRE	6.5-7.0-8.0	7J	3042	80	-	
	LT265/75R16	123/120R	10PR-LRE	7.0-7.5-9.0	7 1/2J	3415	80	-	
	LT285/75R16	126/123R	10PR-LRE	7.5-8.0-9.5	8J	3750	80	-	
17"	*NEW 225/65R17	102T	-	6-6.5-7	6.5	1874	44	500AA	
	*NEW 235/65R17	104T	-	6.5-7-7.5	7	1984	44	500AA	
	245/75R17	110H	-	6.5-7.0-8.0	7J	2337	44	500 A A	
	255/75R17	115T	-	6.5-7.0-8.5	7J	2679	44	500 A A	
	265/65R17	116T	-	7.5-8.0-9.5	8J	2756	50	500 A A	
	265/70R17	113T	-	7.0-8.0-9.0	8J	2535	44	500AA	
	LT245/75R17	121/118S	10PR-LRE	6.5-7.0-8.0	7J	3195	80	-	
	LT265/70R17	121/118S	10PR-LRE	7.0-8.0-9.0	8J	3195	80	-	
18"	*NEW 225/55R18	102T XL	-	6.5-7-7.5	7	1874	49	500AA	
	*NEW 225/60R18	104T XL	-	6-6.5-7	6 1/2	1984	49	500AA	
	*NEW 265/60R18	114T XL	-	7.5-8-8.5	8	2601	49	500AA	
	265/65R18	114H	-	7.5-8.0-9.5	8J	2601	44	500 AA	
	275/65R18	114T	-	7.5-8.0-9.5	8J	2601	44	500AA	
	LT265/70R18	124/121S	10PR-LRE	7.0-8.0-9.0	8J	3527	80	-	
	LT275/65R18	123/120S	10PR-LRE	8.0-9.5	8J	3417	80	-	
	LT275/70R18	125/122S	10PR-LRE	7.0-8.0-9.0	8J	3640	80	-	
	*Coming Soon	LT285/65R18	125/122S	-	*Coming Soon	-	*Coming Soon	-	-
	*NEW	LT285/75R18	129/126Q	10PR	7.5-8-8.5	8	4080	80	-
20"	*NEW 265/50R20	111T XL	-	8-8.5-9	8 1/2	2403	49	500AA	
	275/55R20	117H	-	7.5-8.5-9.5	8 1/2J	2833	49	500AA	
	275/60R20	119H	-	7.5-8.0-9.5	8J	2998	49	500AA	
	LT265/60R20	121/118S	10PR-LRE	8.0-9.5	8J	3197	80	-	
	LT275/65R20	126/123S	10PR-LRE	8.0-9.5	8J	3750	80	-	
	LT285/55R20	122/119S	10PR-LRE	8.5-9.0-10.0	9J	3305	80	-	
22"	*NEW 275/50R22	115T XL	-	8-8.5-9	8.5	2679	49	500AA	
	285/45R22	116H	-	9 1/2J	-	2756	49	500AA	

Tire sizes, technical data and product availability are subject to change. Please see americanroadstar.com for the most up-to-date information.

MUD-TERRAIN M/T Tires



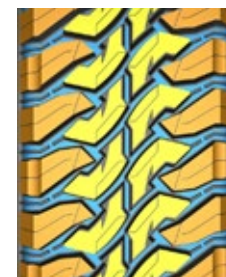
- SUV Metric Sizes - High Float Sizes 17, 18, 20 & 22" Rim Diameters
- 50, Series Aspect Ratios & High Float
- 19/32 Tread Depth
- Moderated Rubber to Void Ratio Reduces noise, Increases Wear character and Mileage. Attractive Marked Tread Design Produces great traction for all surface conditions. Aggressive & Profound Wrap Around Shoulder Elements are functional.
- 3 Polyester Body Plies for strength and resilience
- 2 Wide Steel Belts Strengthen the overall tread area. Provides stability, excellent wear character & long mileage.
- Jointless Nylon Band Spiral wound for uniformity Increases strength in the high stress shoulder area.

M/T

Wheel Dia.	TIRE SIZE	LI / SR	PLY	AMERICAN STANDARD FOR THE RIM	REC RIM (MEASURING RIM) WIDTH (in.)	MAX LOAD (lbs)	MAX PSI	UTQG
17"	33x12.50R17LT	120Q	10PR/LRE	8.5-10.0-11.0	10J	3085	65	-
	35x12.50R17LT	125Q	10PR/LRE	8.0-10.0-10.5	10J	3640	65	-
18"	33x12.50R18LT	122Q	12PR/LRF	8.5-10.0-11.0	10J	3305	80	-
	35x12.50R18LT	128Q	12PR/LRF	8.5-10.0-11.0	10J	3970	80	-
20"	33x12.50R20LT	119Q	12PR/LRF	8.5-10.0-11.0	10J	3000	80	-
	35x12.50R20LT	125Q	12PR/LRF	8.5-10.0-11.0	10J	3640	80	-
22"	33x12.50R22LT	114Q	12PR/LRF	8.5-10.0-11.0	10J	2600	80	-
	35x12.50R22LT	121Q	12PR/LRF	8.5-10.0-11.0	10J	3195	80	-

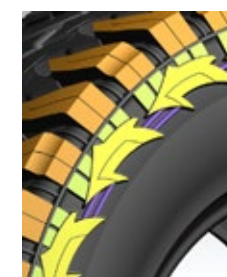
Tire sizes, technical data and product availability are subject to change. Please see americanroadstar.com for the most up-to-date information.

PATTERN INTRODUCTIONS



- Excellent Driving Performance The optimum ratio of rubber and void on the tread and the special stepped edge treatment removal of dirty under extreme off-road conditions effectively, ensuring the excellent driving performance.
- Water And Snow Drainage Performance Wide and deep pattern groove design

enhances the anti-skip performance of tires under rainy and snowy road greatly.



- Excellent Gripping Design Solid square shoulder increases the contact area between tread and ground greatly, improves the grip and bearing capacity of wet and dry road, making more stable driving.
- Wearing And Stabbing Resistance Aggressive sidewall design prevents damage and enhances grip when in deep mud or rock climbing.

**RUGGED-TERRAIN
R/T Tires**



Super aggressive style with refined road manners. Large laterally oriented blocks provide extra biting grip with stepped- edge and bold sidewall elements. Lateral groove and zig-zag valleys create channels for water evacuation and snow traction. With a wide flat contact patch, the stable block design gives constant contact with the road ensuring smooth driving, aggressive grip in handling and outstanding all-weather performance on the road. Off-road, the many biting elements of the sidewalls, blocks and grooves will make short work of rocks, mud, sand or snow.



**DUAL
SIDEWALL
FINISH**



R/T

Wheel Dia.	TIRE SIZE	LI / SR	PLY	AMERICAN STANDARD FOR THE RIM	REC RIM (MEASURING RIM) WIDTH (in.)	MAX LOAD (lbs)	MAX PSI	UTQG
16" *NEW	LT265/75R16	123/120Q	10/E	7-7.5-8	7.5	3415	80	-
	*NEW 265/65R17	116T XL	-	7.5-8-8.5	8	2756	49	500AA
	*NEW 265/70R17	115T	-	7.5-8-8.5	8	2679	44	500AA
	*NEW 33x12.50R17LT	124Q	12/F	9.5-10-10.5	10	3525	95	-
17" *NEW	*NEW 35x12.50R17LT	121Q	12/F	9.5-10-10.5	10	3195	95	-
	*NEW 37x12.50R17LT	128Q	12/F	9.5-10-10.5	10	3970	65	-
	*NEW LT265/70R17	123/120Q	10/E	7.5-8-8.5	8	3415	80	-
	*NEW LT285/70R17	126/123Q	10/E	8-8.5-9	8 1/2	3750	80	-
18" *NEW	*NEW LT295/70R17	128/125Q	10/E	8-8.5-9	8 1/2	3970	80	-
	*NEW LT315/70R17	128/125Q	12/F	9-9.5-10	9 1/2	3750	80	-
	*NEW 265/60R18	114T XL	-	7.5-8-8.5	8	2601	49	500AA
	*NEW 265/65R18	116T XL	-	7.5-8-8.5	8	2756	49	500AA
	*NEW 265/70R18	116T	-	7.5-8-8.5	8	2756	44	500AA
	*NEW 275/65R18	116T XL	-	7.5-8-8.5	8	2756	49	560AA
	*NEW 33x12.50R18LT	118Q/122Q	12/F	9.5-10-10.5	10	3305	80	-
	*NEW 35x12.50R18LT	123Q/128Q	12/F	9.5-10-10.5	10	3970	80	-
	*NEW LT265/70R18	124/121Q	10/E	7.5-8-8.5	8	3525	80	-
	*NEW LT275/65R18	123/120Q	10/E	7.5-8-8.5	8	3415	80	-
20" *NEW	*NEW LT275/70R18	128/125Q	12/F	7.5-8-8.5	8	3640	80	-
	*NEW LT285/65R18	125/122Q	10/E	8-8.5-9	8 1/2	3640	80	-
	*NEW LT285/75R18	129/126Q	10/E	7.5-8-8.5	8	4080	80	-
	*NEW LT295/70R18	129/126Q	10/E	8-8.5-9	8 1/2	4080	80	-
	*NEW 265/50R20	111T XL	-	8-8.5-9	8 1/2	2403	49	500AA
	*NEW 275/55R20	117T	-	7.5-8.5-9.5	8 1/2J	2833	50	500AA
	*NEW 275/60R20	116T XL	-	7.5-8-8.5	8	2756	49	500AA
	*NEW 305/55R20	116T	-	9-9.5-10	9 1/2	2756	44	500AA
	*NEW 33x12.50R20LT	119Q	12/F	8.5-10.0-11.0	10J	3000	80	-
	*NEW 35x12.50R20LT	125/121Q	12/F	9.5-10-10.5	10	3640	80	-
*NEW 37x12.50R20LT	128Q	12/F	9.5-10-10.5	10	3750	65	-	
	LT275/65R20			COMING SOON				

**RUGGED-TERRAIN
R/T Tires**



R/T

Wheel Dia.	TIRE SIZE	LI / SR	PLY	AMERICAN STANDARD FOR THE RIM	REC RIM (MEASURING RIM) WIDTH (in.)	MAX LOAD (lbs)	MAX PSI	UTQG
20"	*NEW LT285/55R20	122/119Q	10/E	8.5-9-9.5	10	3305	80	-
	*NEW LT285/60R20	125/122Q	10/E	8-8.5-9	8 1/2	3640	80	-
	*NEW LT285/65R20	127/124Q	10/E	8-8.5-9	8 1/2	3860	80	-
	*NEW LT295/60R20	126/123Q	10/E	8-8.5-9	8 1/2	3750	80	-
22"	*NEW 275/50R22	115T XL	-	8-8.5-9	8 1/2	2679	49	500AA
	*NEW 285/45R22	114H XL	-	9-9.5-10	9 1/2	2601	49	500AA
	*NEW 305/45R22	118H XL	-	9.5-10-10.5	10	2910	49	500AA
	*NEW 33x12.50R22LT	114/109Q	12/F	9.5-10-10.5	10	2600	80	-
	*NEW 35x12.50R22LT	121/117Q	12/F	9.5-10-10.5	10	3195	80	-
24"	*NEW 37x12.50R22LT	127/123Q	12/F	9.5-10-10.5	10	3860	80	-
	*NEW 33x12.50R24LT	106Q	12/F	11-11.5-12	11 1/2	1820	65	-
	*NEW 35x12.50R24LT	116Q	12/F	10-10.5-11	10 1/2	2405	65	-

Tire sizes, technical data and product availability are subject to change. Please see americanroadstar.com for the most up-to-date information.

PATTERN INTRODUCTIONS



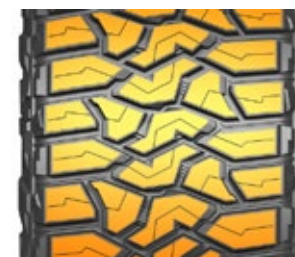
Lateral Grooves and Zigzag longitudinal design

Provide aggressive traction in rain, mud, snow and sand. Rock-crawler looks with impeccable on-highway manners



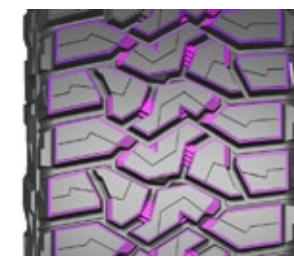
Concave and convex sidewall design

Concave and convex sidewall extend from the shoulder blocks down to the sidewall for extra off-road traction.



Stable block design

promotes even wear while providing a consistent contact patch and large outside tread elements for great dry handling



Stepped block edges, stepped block ties

Reduce irregular wear, fight stone retention and create additional biting surfaces for traction on wet surfaces, snow and Variable step shape block design for extra bite to get more traction.

AMERICAN ROAD STAR ST



NEW

ST SEMI-STEEL

ST SPECIAL TRAILER

SEMI-STEEL / ST

SIZE	PLY
ST175/80R13	8
ST185/80R13	8

SIZE	PLY
ST205/75R14	6
ST205/75R14	8
ST215/75R14	8

SIZE	PLY
ST205/75R15	6
ST205/75R15	8
ST225/75R15	8
ST225/75R15	10

SIZE	PLY
ST235/85R16	10
ST235/85R16	12
ST235/80R16	10
ST235/80R16	12
ST225/90R16	10
ST225/90R16	12

AMERICAN ROAD STAR ST



NEW

ST FULL-STEEL

ST SPECIAL TRAILER

FULL-STEEL / ST

SIZE	PLY
ST225/90R16	14
ST235/80R16	14
ST235/85R16	14





ARS 1000 ARS 1100

SMART WAY

STEER ALL-POSITION



ARS 2000 ARS 2200

SMART WAY

CLOSED-SHOULDER DRIVE



ARS 3000

REGIONAL

OPEN - SHOULDER DRIVE



ARS 4000

TRAILER



ARS 5000

REGIONAL

ON-OFF ROAD / MIXED-SERVICE



ARS 6000

REGIONAL

PICK-UP/DELIVERY / ALL-POSITION



ARS SERIES
COMMERCIAL TBR

**AMERICAN
ROAD STAR
TIRES**

COMMERCIAL TRUCK TIRES



**SMART WAY
STEER / ALL-POSITION**



ARS 1000 ARS 1100

ARS1000- ARS1100 - Premium Fuel-Efficient All-Position Specialized tread compound for low rolling resistance 5 Straight ribs with closed shoulders for constant contact and long wear Sipping, cross grooves and wavy channels at bottom of grooves improve wet traction.

220 Tread width

ARS 1000 - ARS 1100 SMART WAY / ALL-POSITION

SIZE	PLY	DEPTH (1/32")	LOAD INDEX	SPEED INDEX	O.D.	S.W.	R.W.	A.P.	MAX LOAD SINGLE	MAX LOAD DUAL
11R22.5	14/G	18/32	144/142	M	41.5	11.0	8.25	-	6175	5840
11R22.5	16/H	18/32	146/143	M	41.5	11.0	8.25	120	6610	6005
295/75R22.5	14/G	18/32	144/141	M	39.9	11.7	9.00	110	6175	5675
295/75R22.5	16/H	18/32	146/143	M	39.9	11.7	9.00	120	6610	6005
11R24.5	14/G	18/32	146/143	M	43.5	11.0	8.25	-	6610	6005
11R24.5	16/H	18/32	149/146	M	43.5	11.0	8.25	120	7160	6610
*285/75R24.5	14/G	18/32	144/141	M	41.3	11.1	8.25	-	6175	5675
*285/75R24.5	16/H	18/32	147/144	M	41.3	11.1	8.25	120	6780	6175
225/70R19.5	14/G	18/32	128/126	M	31.9	8.9	6.75	110	3970	3750
225/70R19.5	16/H	18/32	129/128	M	31.9	9.8	6.75	120	4190	3970
245/70R19.5	14/G	18/32	133/131	M	33.0	8.9	7.50	110	4540	4300
*245/70R19.5	16/H	18/32	135/133	M	33.0	9.8	7.50	120	4805	4540
*255/70R22.5	16/H	18/32	140/137	M	36.6	10.0	7.50	120	5510	5070

(*285/75R24.5) is ARS1100.

Tire sizes, technical data and product availability are subject to change. Please see americanroadstar.com for the most up-to-date information.



ARS 1000 ARS 1100



**SMART WAY
CLOSED-SHOULDER DRIVE**



ARS 2000 ARS 2200

ARS2000 - ARS2200 - Closed-Shoulder Drive-Position Specialized tread compound for low rolling resistance closed shoulders for constant contact and long wear Large blocks, sipping, cross grooves to improve wet traction Large inside lugs for improved traction in all conditions Stone ejectors in groove to reduce stone drilling
Extra-deep 28/32 tread for maximum mileage.
220 Tread width

ARS 2000 - ARS 2200 SMART WAY / CLOSED-SHOULDER DRIVE

SIZE	PLY	DEPTH (1/32")	LOAD INDEX	SPEED INDEX	O.D.	S.W.	R.W.	A.P.	MAX LOAD SINGLE	MAX LOAD DUAL
11R22.5	14/G	28/32	144/142	M	41.9	11.0	8.25	-	6175	5840
11R22.5	16/H	28/32	146/143	M	41.9	11.0	8.25	120	6610	6005
295/75R22.5	14/G	28/32	144/141	M	40.4	11.7	9.00	110	6175	5675
295/75R22.5	16/H	28/32	146/143	M	40.4	11.7	9.00	120	6610	6005
11R24.5	14/G	28/32	146/143	M	43.9	11.0	8.25	-	6610	6005
11R24.5	16/H	28/32	149/146	M	43.9	11.0	8.25	120	7160	6610
*285/75R24.5	14/G	28/32	144/141	M	41.8	11.1	8.25	-	6175	5675
*285/75R24.5	16/H	28/32	147/144	M	41.8	11.1	8.25	120	6780	6175



(*285/75R24.5) is ARS1100.

Tire sizes, technical data and product availability are subject to change. Please see americanroadstar.com for the most up-to-date information.

ARS 2000 ARS 2200



ARS 3000 REGIONAL / OPEN - SHOULDER DRIVE

SIZE	PLY	DEPTH (1/32")	LOAD INDEX	SPEED INDEX	O.D.	S.W.	R.W.	A.P.	MAX LOAD SINGLE	MAX LOAD DUAL
225/70R19.5	14/G	18/32	128/126	N	31.9	8.9	6.75	110	3970	3750
245/70R19.5	16/H	17/32	136/134	N	33.3	9.8	7.5	120	4940	4675

Tire sizes, technical data and product availability are subject to change. Please see americanroadstar.com for the most up-to-date information.

ARS 3000

REGIONAL / OPEN - SHOULDER DRIVE

ARS3000



To achieve superior traction in all conditions, the ARS3000 features a block pattern with five staggered circumferential rows of blocks. The dense block design along the centerline of the tire ensures excellent load support, quick turning response, and a good on-center feel. Additionally, the continuous contact design guarantees consistent rubber-to-road contact, resulting in predictable grip and even wear.

For efficient water evacuation and improved wet traction, cross grooves and sipes are incorporated, along with efficient circumferential grooves. This ensures that the tire can perform well even in wet conditions, providing reliable and safe handling.



ARS 4000 TRAILER

SIZE	PLY	DEPTH (1/32")	LOAD INDEX	SPEED INDEX	O.D.	S.W.	R.W.	A.P.	MAX LOAD SINGLE	MAX LOAD DUAL
11R22.5	16/H	13/32	148/145	M	41.5	11.0	8.25	123	6945	6395
295/75R22.5	14/G	13/32	144/141	M	39.9	11.7	9.00	110	6175	5675
11R24.5	14/G	13/32	146/143	M	43.5	11.0	8.25	105	6610	6005
285/75R24.5	14/G	13/32	144/141	M	41.3	11.1	8.25	110	6175	5675

Tire sizes, technical data and product availability are subject to change. Please see americanroadstar.com for the most up-to-date information.

TRAILER ARS4000



The ARS4000 trailer tire features a shallow tread, which is intended to reduce the rate of wear and prevent irregular wear. Though it is used on a non-dynamic axle, the casing construction of the ARS4000 is the same as for tires on other wheel positions, which increases the casing's value for retreading.

Serrated rib edges are incorporated into the design to reduce stress while multiple sipes contribute to excellent long-term wear characteristics. To assist with self-cleaning of the tread, serpentine graduated groove walls are incorporated into the design, helping the tire maintain grip in mud & dirt.

Overall, the shallow tread design of the ARS4000 ensures that the tire performs well and lasts longer, providing reliable and cost-effective tire for trailer applications.

ARS 4000



ARS 5000 ON-OFF / MIXED-SERVICE ALL-POSITION

SIZE	PLY	DEPTH (1/32")	LOAD INDEX	SPEED INDEX	O.D.	S.W.	R.W.	A.P.	MAX LOAD SINGLE	MAX LOAD DUAL
11R22.5	16/H	21/32	146/143	N	41.5	11.0	8.25	120	6610	6005
275/70R22.5	18/J	18/32	148/145	N	37.7	10.9	8.25	131	6940	6395
315/80R22.5	20/L	20/32	157/154	N	42.4	12.3	9.00	130	9090	8270
385/65R22.5	20/L	19/32	160	M	42.2	15.3	11.75	130	9920	-
425/65R22.5	20/L	21/32	165	N	44.3	16.6	12.25	120	11400	-
11R24.5	16/H	21/32	149/146	N	43.5	11.0	8.25	120	7160	6610

Tire sizes, technical data and product availability are subject to change. Please see americanroadstar.com for the most up-to-date information.

ON-OFF / MIXED-SERVICE ALL-POSITION
ARS5000



The all-position mixed-service tread design of the ARS5000 is robust and suitable for many on/off-highway applications. The tire features three large zig-zag circumferential grooves that provide excellent traction in a variety of surface conditions. An indented outside shoulder rib, coupled with zig-zag interior ribs, create grabbing surfaces in mud, rock, and sand.

The tire's resilient tread compound promotes long wear even in harsh conditions, making it ideal for rugged mixed-service applications.



ARS 6000 REGIONAL / ALL-POSITION

SIZE	PLY	DEPTH (1/32")	LOAD INDEX	SPEED INDEX	O.D.	S.W.	R.W.	A.P.	MAX LOAD SINGLE	MAX LOAD DUAL
215/75R17.5	16/H	16/32	135/133	L	30.2	8.3	6.00	123	4805	4540
235/75R17.5	18/J	16/32	143/141	L	31.4	9.2	6.75	127	6005	5675
245/70R17.5	18/J	16/32	143/141	K	31.1	9.8	7.5	130	6005	5675

Tire sizes, technical data and product availability are subject to change. Please see americanroadstar.com for the most up-to-date information.

REGIONAL / ALL-POSITION
ARS 6000



The all-position ARS6000 all-steel radial tire is designed specifically for pick-up/delivery applications, with solid outside ribs that offer strength and resilience to curbing. The undulating circumferential grooves are designed to provide excellent water evacuation, ensuring grip in wet conditions. Additional siping on the interior ribs provides extra biting edges for traction in various surface conditions while serrated center ribs increase traction and reduce irregular wear.



AMERICAN ROAD STAR PASSENGER / LIGHT TRUCK TIRE LIMITED WARRANTY

This warranty applies only to tires purchased in the United State on or after October 01, 2018

This Limited Warranty is made by WTD (Wholesale Tire Distributor) & applies to the American Road Star passenger & light truck tires listed on the summary of Limited Warranty Coverage Chart. The original purchaser is entitled to the benefits of this limited warranty unless a warranty exclusion applies or the purchaser has failed to comply with this Limited Warranty's use, maintenance, or tire rotation requirements. This warranty applies only to tires purchased on or after October 01, 2018

"A. Eligibility for Limited Warranty Coverage

You must be the original purchaser on or after October 01, 2018 of a warranted tire & the tire must have been continuously installed on the vehicle on which it was first installed. Your sales receipt is your proof of purchase & the vehicle upon which the tire was originally installed. This limited tire warranty is not transferable to another vehicle or to another person. This warranty does not cover tires installed on a commercial vehicle or a vehicle put in commercial use. To be & remain eligible for the Tread Life portion of your Limited Warranty, you must present proof that you have rotated the American Road Star tire, in accordance with the prescribed rotation pattern, at least every 3,000 - 4,000 miles following installation.

"B. Materials and Workmanship Warranty

Selected American Road Star tread patterns (indicated in the warranty chart of this document) are warranted against defects in materials and workmanship and will be replaced free of charge within the first 2/32" wear of original usable tread life, or within 6 months from the period of purchase, whichever comes first. After the 100% replacement term expires and the tire is still within 60 months from the manufacturing date, credit will be determined by the percentage of original tread depth remaining on the tire. Any additional costs of mounting, balancing, installation charges, shipping, and any applicable sales tax or use taxes are not covered."

"C. Limited Mileage Warranty

Selected American Road Star tread patterns (indicated in this document) are manufactured to protect against premature tread wear. If a tire reaches the end of its usable tread life (2/32") before the stated mileage warranty (indicated in this document) the original purchaser will be issued a comparable American Road Star Tire on a pro-rata basis, based on the percentage of remaining usable tread depth down to the remaining 2/32" tread depth. Tread must be worn down evenly across the face of the tread. In order to maintain this limited warranty, all tires must be rotated at least every 3,000-4,000 miles. Any additional costs of mounting, balancing, installation charges, shipping, and any applicable sales tax or use taxes are not covered. Documentation is required showing alignment, tire rotation records, along with date of installation and removal to maintain tread wear warranty. Tires MUST be rotated 3,000-4,000 miles. Tread must be worn down evenly across the face of the tread."

"D. Exclusions Not Covered Under This Limited Warranty

- Tires used on RVs (recreational vehicles), Motor Homes, Trailers, or tires used in commercial service.
- Tires that are used in a staggered application where tires on the back of the vehicle are a different size than those on the front.
- Any tire that has any brand information, sizes, or the D.O.T. identification numbers removed intentionally.
- Ride complaints after the first 2/32" of tread wear or replacement of 3 or more tires from the same vehicle will not be accepted.

- Premature/irregular wear due to vehicle mechanical deficiencies.
- Failure to rotate the tires at recommended intervals.
- Road hazard damage including cuts, snags, bruises, punctures, tire repair, impact breaks, etc. (Select tires indicated in this document have coverage under the American Road Star Tire Road Hazard Policy.)
- Any tires on any vehicle that are registered and normally operated outside the U.S.
- Any damage from over/under inflation, tire overloading, fire, theft, and any defective mechanical condition of the vehicle.
- Any damage from incorrect tire mounting/dismounting/ balancing, any incorrect tire application, water or any other material trapped inside the tire during tire mounting.
- Any racing or other misapplication of tire to improper road conditions.
- Environmental ozone or weather cracking after 48 months from tire manufacture date.
- Any accident, fire, chemical corrosion, tire alteration, vandalism, abuse, or running on a flat tire.
- Any tires worn beyond the tire bar wear indicators and less than 2/32".
- Uneven wear in which the tread groove difference is 2/32" or more across the face of the tire.
- Any loss of time or use, inconvenience, any incidental or consequential damage.
- Flat spotting caused by improper storage or brake lock."

"F. Road Hazard Warranty

American Road Star Brand Tires sold in the US by authorized American Road Star Tire dealers, are assigned a Road Hazard Warranty that protects the consumer against non-repairable damage caused by puncture, snag, cut, bruise or impact break. Typical road hazards are nails, glass, potholes and other debris. If road hazard damage occurs within first 25% wear of the tire's usable tread or the first 6 months, whichever comes first, a replacement will be made with a comparable American Road Star Tire 100% free of charge. If the damage occurs before 50% of the tread has been worn away or within the first 12 months of purchase, whichever comes first, the American Road Star Tire Dealer will reimburse 50% of the original cost. Under all circumstances, the cost of mounting, balancing and any other service charges including applicable taxes are required to be paid by the consumer.

What is not covered under the Road Hazard Replacement Program?

- A tire that has failed or damaged due to an accident.
- A tire that has failed or damaged due to vandalism.
- A tire that has repairable damage under Rubber Manufacturers Association (RMA) standards.
- A tire that has failed or damaged due to commercial use.
- A tire that has failed or damaged due to racing or off-road use.
- A tire that has failed or damaged due to the use of snow chains or studs.
- A tire that has failed or damaged due to irregular wear caused by mechanical issues.
- Tires transferred from the vehicle that they were originally installed on.
- A tire that is past 2 years from the date of purchase or first 50% of tread wear, whichever comes 1st.- Run-flat tires are not in the scope of this warranty."

LIMITED TIRE WARRANTY REGISTRATION NUMBER (To be completed at the time of purchase:)

Date: _____ Odometer: _____

Customer Information:

Name: _____

Address: _____

City: _____ State: _____

Phone No.: _____

Vehicle Information:

Year: _____ Make/Model: _____

Tire Brand Purchased: _____

Tire Size/Pattern: _____

Recommended Tire Pressure Front: _____ PSI _____

Recommended Tire Pressure Rear: _____ PSI _____

DOT No. Information:

Tire #1 _____

Tire #2 _____

Tire #3 _____

Tire #4 _____

Tire Removal Information:

Date: _____ Odometer: _____

Dealer Name: _____

Dealer Address: _____

Dealer Signature: _____

IMPORTANT Tire Owner – Keep this page as part of your limited warranty claim. (invoice) must be submitted to an authorized American Road Star Tire Dealer
 1. The information on this page must be completed to validate any limited warranty claim.
 2. In the event of a limited warranty claim, this information and proof of purchase (copy of invoice) must be submitted to an authorized American Road Star Tire Dealer.

MILEAGE WARRANTY ADJUSTMENT TABLE

Percent WTD pays per original warranty mileage on American Road Star Tires*

Mileage up to	30,000	40,000	50,000	Mileage up to	30,000	40,000	50,000
1000	97%	98%	98%	26000	13%	35%	48%
2000	93%	95%	96%	27000	10%	33%	46%
3000	90%	93%	94%	28000	7%	30%	44%
4000	87%	90%	92%	29000	3%	28%	42%
5000	83%	88%	90%	30000	0%	25%	40%
6000	80%	85%	88%	31000		23%	38%
7000	77%	83%	86%	32000		20%	36%
8000	73%	80%	84%	33000		18%	34%
9000	70%	78%	82%	34000		15%	32%
10000	67%	75%	80%	35000		13%	30%
11000	63%	73%	78%	36000		10%	28%
12000	60%	70%	76%	37000		8%	26%
13000	57%	68%	74%	38000		5%	24%
14000	53%	65%	72%	39000		3%	22%
15000	50%	63%	70%	40000		0%	20%
16000	47%	60%	68%	41000			18%
17000	43%	58%	66%	42000			16%
18000	40%	55%	64%	43000			14%
19000	37%	53%	62%	44000			12%
20000	33%	50%	60%	45000			10%
21000	30%	48%	58%	46000			8%
22000	27%	45%	56%	47000			6%
23000	23%	43%	54%	48000			4%
24000	20%	40%	52%	49000			2%
25000	17%	38%	50%	50000			0%





AMERICAN ROAD STAR COMMERCIAL TIRE LIMITED WARRANTY

This warranty applies only to tires purchased in the United State on or after October 01, 2018

This Limited Warranty Policy provides for tire replacement under certain specified conditions. This policy applies to all AMERICAN ROADSTAR Radial Truck tires used in normal highway service displaying warrant able conditions. There is no warranty for tires that wear out, fail or become unserviceable because of neglect or mistreatment. It is essential that you adhere to all standard safety and maintenance practices and that you carefully read the terms and conditions defined in this Warranty. Wholesale Tire Distributors hereby warrants that every new AMERICAN ROAD STAR Radial Truck tire is free from defects in workmanship and material for the life of the original tread of the new tire less 2/32". The life of the original usable tread ends when the tire has worn down with only 2/32" remaining. Once the tread is worn down to the top of the built-in "wear indicators" in the tread grooves molded at 2/32", the tire is considered fully worn out regardless of its age or mileage. This warranty applies to AMERICAN ROAD STAR Radial Truck tires purchased through an authorized dealer of Wholesale Tire Distributors (WTD)

RECOMMENDED SAFETY PRACTICES

Serious injury or property damage may result from:

- TIRE FAILURE DUE TO UNDERINFLATION, OVERINFLATION and/or OVERLOADING
- Not following the owner's manual or tire placard in vehicle
- TIRE FAILURE DUE TO EXCESSIVE HIGH SPEED. Follow the owner's manual or tire placard in vehicle.
- EXPLOSION OF TIRE /RIM ASSEMBLY DUE TO IMPROPER MOUNTING. Only specially trained people should mount tires.
- FAILURE TO MOUNT RADIAL TIRES ON APPROVED RIMS.
- FAILURE TO DEFLATE SINGLE OR DUAL ASSEMBLIES COMPLETELY BEFORE DISMOUNTING.
- TIRE SPINNING. On slippery surfaces such as rain, snow, mud, ice etc. do not spin tires as personal injury and severe damage may result from excessive wheel spinning, including tire disintegration or axle damage.

WARRANTY ELIGIBILITY

This policy applies to the original equipment and aftermarket consumer/owner, or user of any new AMERICAN ROAD STAR radial truck tire sold through an authorized dealer of Wholesale Tire Distributors. Eligible tires must bear the AMERICAN ROAD STAR brand name, a complete D.O.T. serial identification number, NOT be branded as Non-Adjustable (NA) and operated in normal highway service. Eligible tires must be on the vehicle on which they were originally installed, in conformance with the vehicle manufacturer's recommendations. These tires are covered by this warranty for the life of the original usable tread depth (the original tread depth down to the level of treadwear indicators molded at 2/32 inch) within 72 months from the date of purchase (proof of purchase required). If proof of purchase is not available, the coverage will be 72 months from the date of manufacture.

NO CHARGE ADJUSTMENT

If a defect in workmanship and materials is found in any AMERICAN ROAD STAR Radial Truck tire within the first 50% of the original usable tread (original tread depth, less 2/32", divided by 2), Wholesale Tire Distributors will replace such tire with a comparable new tire. Mounting and balancing services up to \$16.00/tire are covered in the form of a credit on the replacement tire invoice. Other applicable taxes and fees for the comparable new AMERICAN ROAD STAR tire are payable by the owner.

50% FREE REPLACEMENT WARRANTY

If a defect in workmanship and materials is found in any AMERICAN ROAD STAR Radial Truck tire after the first 50% of the original usable tread, a credit will be given toward the purchase of a comparable new AMERICAN ROAD STAR tire; pro-rated based on the usable tread depth remaining on the returned tire versus the original tread of the new tire. Applicable taxes and amount equal to the full current Federal Excise Tax (FET) on the new tire and costs of mounting and balancing services will be borne by the owner. Adjustments on out-of-balance or out-of-round tires are allowed only during the first 2/32" or 10% of the original tread.

EXCLUSIONS

A. All AMERICAN ROAD STAR warranties are limited to the original purchaser and the original vehicle on which they are mounted. Warranties are not assignable to subsequent purchasers or vehicles.

B. This limited warranty is valid only in the United States. Any tire used or equipped on a vehicle registered or regularly operated outside the United States is not covered by this warranty.

C. The following is not covered by the Limited Warranty:

- a. Tire branded or marked "Non-Adjustable" (N/A) or "Blemished" (Blem), or previously adjusted.
- b. Failure, damage or irregular wear due to:
 - Road hazards (i.e., puncture, cut, snag, impact breaks, etc.), wreck or collision.
 - Fire, accident or vandalism.
 - Mechanical condition of vehicle, including misalignment, wheel imbalance, faulty shocks or brakes.
 - Misapplication of tire, use of improper inner tube.
 - Alteration of the tire or addition of alien material or transfer from one vehicle to another.
 - Faulty retreading or repairing procedures or materials used in the retreading process.
- c. Cost of mounting and balancing services except as noted.
- d. Loss of time or use, inconvenience, or any incidental or consequential damages.
- e. Tires operated at speeds that exceed posted limits, and tires used in racing or competition.
- f. Tires used in non-standard applications.
- g. Tires designed for highway use operated in off-road conditions.
- h. Tires that are improperly repaired including, but not limited to; sidewall modification by addition or removal of material, tubeless tires into which anything other than air has been introduced including foam, dry or liquid balancers and sealants.
- i. Tire/tube failure and air loss that has resulted from tube manufacturing deficiencies, tube deterioration, tire under/over inflation, improper tube and flap assembly, mounting tool damage, use of wrong size tube or a used tube, a bias tube in a radial application, applying an incompatible mounting lubricant, foreign objects contacting tube assembly.
- j. Wholesale Tire Distributors does not warrant tubes, tube fitment, tube usage or the consequences thereof unless supplied by Wholesale Tire Distributor with the tire as a set.
- k. Tires subjected to vehicle suspension deficiencies, wheels misalignment, improperly maintained balance of inflation
- l. Tires submitted for ride disturbance complaints after the first two thirty-seconds of an inch (2/32") new tread wear.
- m. Tires with the Department of Transportation (DOT) number removed.
- n. Tires worn past the last two thirty-seconds of an inch (2/32") of original tread depth.
- o. Ozone cracking or weather checking on tires submitted more than four years (4) after the date of manufacture.
- a. Tires rendered not retreadable or unserviceable due to faulty or improper retreading. Improper retreading includes buffing to the cord surface, insufficient vulcanization, improper repair and failure of the bonding agent.
- b. Wholesale Tire Distributor Tire does not warrant inspection for retread ability, the retread process, design, workmanship or materials.

CASING POLICY

a. Casings of AMERICAN ROAD STAR radial truck tires are warranted against defects in workmanship and material throughout the first and second retread (see c. below for age restrictions). Defects in workmanship and material found in the process of buffing for retread are warrant able. The number of retreads must be clearly identified on the casing sidewall.

b. If an examination shows that a casing of an AMERICAN ROAD STAR radial truck tire failed due to a defect in workmanship or material, Wholesale Tire Distributors will give a credit towards the purchase price of a comparable new AMERICAN ROAD STAR tire based on the values listed below:

SIZE	CASING VALUE (US\$)	SIZE	CASING VALUE (US\$)
215/75R17.5	\$20	295/75R22.5	\$65
235/75R17.5	\$20	11R24.5	\$65
255/70R22.5	\$55	285/75R24.5	\$65
275/70R22.5	\$55	12R22.5	\$65
225/70R19.5	\$25	315/80R22.5	\$65
245/70R19.5	\$25	385/65R22.5	\$75
10R22.5	\$45	425/65R22.5	\$80
11R22.5	\$65	445/50R22.5	\$80

c. Above casing warranty valid only for first six (6) years after date of manufacture of original tire for all casings. Casing value is reduced by 50% of the above values for the second retread.

OWNERS' OBLIGATIONS

In order to be eligible for AMERICAN ROAD STAR Limited Warranty service, the owner must:

- Present the defective tire to an authorized AMERICAN ROAD STAR dealer.
- Present proof of purchase to the satisfaction of the dealer.
- Pay the amount due on a new tire, less the amount of credit, including taxes, mounting and balancing charges (except as noted) or cost of other services ordered.
- Ensure proper tire maintenance, inflation pressures & loading practices in accordance with vehicle and applicable tire guides, as well as lawful operation of vehicles and adherence to government regulations. Wholesale Tire Distributors offers a guide to maintenance and care of AMERICAN ROAD STAR tires in the form of a section entitled, "Safety Practices" (above). It is strongly recommended that these guidelines be read.

LEGAL RIGHTS

To the extent permitted by law, Wholesale Tire Distributors and its servicing agents shall not be held responsible for any of the following:

- Commercial Loss.
- Damage to or loss of property other than the tire itself.
- Incidental, indirect, special or consequential damages arising from any cause whatsoever, including negligence.

Some states do not allow the exclusion or limitation, of incidental or consequential damages, so the above limitation or exclusions may not apply to you. No representative or dealer has authority to make any representation, promise, or agreement on behalf of Wholesale Tire Distributors except as stated herein. Any tire, no matter how well constructed, may fail in service or otherwise become unserviceable due to conditions beyond the control of the manufacturer. Under no circumstances is this representation that a tire failure cannot occur. This warranty gives you specific legal rights, and you may also have other rights that vary from state to state. This limited warranty is applicable only in the United States.

No implied or express warranties are extended beyond the time when the tire has delivered its original tread life, except for the express warranties set forth in this "Limited Warranty". All warranties, promises and agreements, express or implied, merchantability or otherwise, are excluded to the extent permitted by law.

DISCLAIMER

This warranty, or any warranty stored or referenced to herein, is exclusive and in lieu of any other warranty regarding the quality of AMERICAN ROAD STAR tires whether expressed or implied, and remedies for breach thereof shall be limited to those specifically provided herein.

AMERICAN ROAD STAR TIRES



SUMMARY OF LIMITED TIRE WARRANTY COVERAGE BY AMERICAN ROAD STAR TREAD PATTERN

Pattern / Product Name	Tread Wear/Mileage Warranty	Road Hazard Replacement Warranty	First Year / First 2/32nds	Second Year & Within the First 50% of Tread Depth
ProA/S - All Rim Diameters	50,000 Miles	Yes	Free	Prorated
Sport A/S - 15,16 &17" Rim Diameters	50,000 Miles	Yes	Free	Prorated
Sport A/S - 18,19,20,22 & 24" Rim Diameters	40,000 Miles	Yes	Free	Prorated
HP A/S - All Rim Diameters	40,000 Miles	Yes	Free	Prorated
Pro H/T - SUV only	50,000 Miles	Yes	Free	Prorated
Eco Pro H/T2	55,000 Miles	Yes	Free	Prorated
All Terrain A/T	50,000 Miles	Yes	Free	Prorated
Mud Terrain M/T	N/A	N/A	N/A	N/A
Rugged Terrain R/T	N/A	N/A	N/A	N/A
TBR ARS1000 / ARS1100	N/A	N/A	N/A	N/A
TBR ARS2000 / ARS2200	N/A	N/A	N/A	N/A

** LT Metric Sizes is not included in this Limited Mileage and Road Hazard Warranty.

** Eligible tires for this warranty must meet the vehicle specifications of the original size applied at Original Equipment


NOTE: In the event of a warranty claim, this page must be attached to the American Road Star standard claim form.



AMERICAN ROAD STAR TIRES



 2875 POMONA BLVD POMONA, CA 91768

 1 (562)-340-6252

 INFO @ AmericanRoadstar.COM

 WWW.AMERICANROADSTAR.COM

 @americanroadstartires