

# PRODUCT GUIDE



DESIGNED IN USA



**AMERICAN**  
**ROAD STAR**  
TIRES



American Road Star Tires is a innovative brand made with the highest technology to bring you the best quality at the most affordable price. These tires offer superior performance, precision, handling, braking grip, comfort and durability, along with low noise level. American Road Star tire is dedicated to delivering improved savings and operational efficiencies, while reducing environmental impact. These tires are built with your needs and safety in mind and ready to adapt when those needs change.



## CONTENTS

### Passenger Tires

American Road Star HP A/S	page 4
American Road Star Sport A/S	page 6
<b>NEW</b> American Road Star Run Flat	page 12
American Road Star Pro A/S	page 14

### Light Truck Tires

American Road Star H/T	page 16
American Road Star VAN	page 20
American Road Star A/T	page 22
American Road Star M/T	page 24
<b>NEW</b> American Road Star R/T	page 26

### **NEW** Commercial (TBR) Tires

- **STEER/ALL-POSITION**

ARS 1000 - ARS 1100	page 30
---------------------	---------
- **REGIONAL CLOSED-SHOULDER DRIVE**

ARS 2000 - ARS 2200	page 34
---------------------	---------
- **REGIONAL OPEN-SHOULDER DRIVE**

ARS 3000	page 36
----------	---------
- **TRAILER**

ARS 4000	page 38
----------	---------
- **ON-OFF ROAD / MIXED-SERVICE**

ARS 5000	page 40
----------	---------
- **REGIONAL PICK-UP/DELIVERY**

ARS 6000	page 42
----------	---------

### LIMITED TIRE WARRANTY PLAN

American Road Star	page 44
Tire Limited Warranty Plan	



## UHP All-Season Ultra High Performance

# AMERICAN ROADSTAR HP A/S



- S.U.V. Sizes - 19, 20, 22, 24 & 26" Rim Diameters 30, 35, 40, 45, 50, & 55 Series Aspect Ratio
- 500 U.T.Q.G.
- 10/32 Tread Depth
- Uniquely Wide & Flat Tread Radius Produces excellent steering progression and ride comfort.
- Aggressive "Grown-Up" tread design. Produces great traction for all weather and road surfaces. Tightly packed shoulder blocks are quiet and wear evenly.
- Jointless Nylon Band Spiral wound for uniformity Increases strength in the high stress shoulder area.
- 2 Wide Steel Belts Strengthen the overall tread area. Provides stability, excellent wear character & long mileage.



## HP A/S

Wheel Dia.	TIRE SIZE	LI / SR	PLY	AMERICAN STANDARD FOR THE RIM	REC RIM (MEASURING RIM) WIDTH (in.)	MAX LOAD (lbs)	MAX PSI	UTQG
19"	255/50ZR19	107Y	-	7.0-8.0-9.0	8J	2149	49	500 A A
20"	275/45R20	110V	-	8.5-9.0-10.5	9J	2337	49	500 A A
	275/55R20	117V	-	7.5-8.5-9.5	8 1/2J	2833	49	500 A A
22"	235/30ZR22	90W	-	-	8 1/2J	1323	49	500 A A
	245/30ZR22	92W	-	-	8 1/2J	1389	50	500 A A
	245/30ZR22	95W	-	-	-	1521	49	500 A A
	265/35ZR22	102W	-	9.0-9.5-10.5	9 1/2J	1874	49	500 A A
	265/40ZR22	106W	-	-	9 1/2J	2094	49	500 A A
	285/45R22	114V	-	9.0-9.5-10.5	9 1/2 J	2601	49	500 A A
	295/30ZR22	110Y XL	-	-	10 1/2J	2337	50	500 A A
24"	305/40R22	114V	-	10.0-11.0-12.0	11J	2601	49	500 A A
	295/35ZR24	110W	-	-	10 1/2J	2337	49	500 A A
26"	305/35R24	112V	-	10.0-11.0-12.0	11J	2469	49	500 A A
	295/30ZR26	107W	-	-	10 1/2 J	2149	49	500 A A
26"	305/30ZR26	109V	-	-	11J	2271	49	500 A A

Tire sizes, technical data and product availability are subject to change. Please see americanroadstar.com for the most up-to-date information.

## PATTERN INTRODUCTIONS



Central longitudinal continuous main rib, provides straight driving stability and high speed controllability ensuring safety. Twin longitudinal main grooves with 3D groove walls are effective in preventing hydroplaning on wet roads, and reduce noise. Continuous blocks ensure efficient ground contact area, providing extreme control and stability.



Zig Zag grooves, cross grooves and sipes improve the all-weather performance of the tire.



With the advanced design concept silica compound and 3D sips distribution ULTRA SPORT A/S provides reliable grip and excellent braking performance in wet and dry conditions.



Optimization of variable random pitch sequence, minimizes noise generation contributing a quiet and comfortable ride.

**UHP All Season  
Ultra High Performance**

**AMERICAN  
ROADSTAR SPORT A/S**



- Sizes - 14, 15, 16, 17, 18, 19, 20 & 22" Rim Diameter 25, 30, 35, 40, 45, 50, 55 & 60 Series Aspect Ratio
- 500 U.T.Q.G.
- 10/32 Tread Depth
- Jointless Nylon Band Spiral wound for uniformity Increases strength in the high stress shoulder area.
- 2 Wide Steel Belts Strengthen the overall tread area. Provides stability, excellent wear character & long mileage.



**SPORT A/S**

Wheel Dia.	TIRE SIZE	LI / SR	PLY	AMERICAN STANDARD FOR THE RIM	REC RIM (MEASURING RIM) WIDTH (in.)	MAX LOAD (lbs)	MAX PSI	UTQG
14"	185/60R14	82H	-	5.0-5.5-6.5	5 1/2J	1047	44	500 A A
	185/55R15	82V	-	5.0-6.0-6.5	6J	1047	44	500 A A
15"	195/50R15	82V	-	5.5-6.0-7.0	6J	1047	44	500 A A
	195/55R15	85V	-	5.5-6.0-7.0	6J	1135	44	500 A A
16"	185/55R16	87V	-	5.0-6.0-6.5	6J	1201	49	500 A A
	195/55ZR16	91W	-	5.5-6.0-7.0	6J	1356	49	500 A A
	205/45ZR16	87W	-	6.5-7.0-7.5	7J	1201	49	500 A A
	205/50ZR16	87W	-	5.5-6.5-7.5	6 1/2 J	1201	44	500 A A
	205/55ZR16	94W	-	5.5-6.5-7.5	6 1/2J	1477	49	500 A A
	215/55ZR16	97W	-	6.0-7.0-7.5	7 J	1609	49	500 A A
17"	225/55ZR16	95W	-	6.0-7.0-8.0	7J	1521	44	500 A A
	195/60R17	90 H	-	5.5-6.0-7.0	6J	1323	44	500 A A
	205/40ZR17	84W	-	-	7 1/2J	1102	49	500 A A
	205/45ZR17	88W	-	-	7J	1235	49	500 A A
	205/50ZR17	93W	-	5.5-6.5-7.5	6 1/2J	1433	49	500 A A
	205/55R17	95V	-	-	6 1/2J	1521	49	500 A A
	215/45ZR17	91W	-	7.0-8.0	7J	1356	49	500 A A
	215/50ZR17	95W	-	6.0-7.0-7.5	7J	1521	49	500 A A
	215/55ZR17	98W	-	6.0-7.0-7.5	7J	1653	49	500 A A
	225/45ZR17	94Y	-	7.0-7.5-8.5	7 1/2J	1477	49	500 A A
	225/45ZR17	91W	-	7.0-7.5-8.5	7 1/2J	1356	44	500 A A
	225/50ZR17	98W	-	6.0-7.0-8.0	7J	1653	49	500 A A
	225/55ZR17	101W	-	6.0-7.0-8.0	7J	1819	49	500 A A
	235/45ZR17	97W	-	7.5-8.0-9.0	8J	1609	49	500 A A
235/50ZR17	100W	-	6.5-7.5-8.5	7 1/2J	1764	49	500 A A	
235/55ZR17	103W	-	6.5-7.5-8.5	7 1/2J	1929	49	500 A A	
235/60R17	102H	-	6.5-7.0-8.5	7J	1874	44	500 A A	
245/40ZR17	95W	-	8.0-8.5-9.5	8 1/2J	1521	49	500 A A	
245/45ZR17	99W	-	7.5-8.0-9.0	8J	1709	49	500 A A	
18"	215/40ZR18	89W	-	7.0-7.5-8.5	7 1/2 J	1279	49	500 A A
	215/45ZR18	89W	-	7.0-8.0	7J	1279	44	500 A A
	215/55R18	95V	-	6.0-7.0-7.5	7J	1521	44	500 A A
	225/40ZR18	92W	-	7.5-8.0-9.0	8J	1389	49	500 A A

SPORT A/S

**UHP All Season**  
**Ultra High Performance**

**AMERICAN ROADSTAR SPORT A/S**



**PATTERN INTRODUCTIONS**

OUTSIDE INSIDE



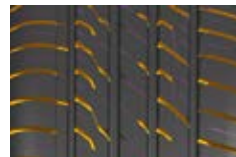
1. 4 wide longitudinal grooves provide good water evacuation for excellent handling performance on wet roads.



2. Outside Anti Eccentric wear block design  
Anti eccentric wear blocks on outer shoulder can increase the tread contact area at braking to obtain uniform contact pressure, which can avoid eccentric wear.



3. Partial Slanted Grooves interrupt air flow across the tread to decrease noise. Partial slanted grooves also can provide stability during cornering



4. Wide Grooves and fine sipes cut through water film to provide wet traction, and greatly reduce noise, providing a comfortable driving experience.



5. Silent pitch variation and sequence design Optimization of pitch width and sequence effectively reduce the noise resonance, resulting in a quieter ride.

**SPORT A/S**

Wheel Dia.	TIRE SIZE	LI / SR	PLY	AMERICAN STANDARD FOR THE RIM	REC RIM (MEASURING RIM) WIDTH (in.)	MAX LOAD (lbs)	MAX PSI	UTQG
18"	225/45ZR18	95W	-	7.0-7.5-8.5	7 1/2J	1521	49	500 A A
	225/50ZR18	99W	-	6.0-7.0-8.0	7J	1709	49	500 A A
	225/55R18	102V	-	6.0-7.0-8.0	7J	2271	49	500 A A
	235/40ZR18	95W	-	8.0-8.5-9.5	8 1/2J	1521	49	500 A A
	235/45ZR18	98W	-	7.5-8.0-9.0	8J	1653	49	500 A A
	235/50ZR18	101W	-	6.5-7.5-8.5	7 1/2J	1819	49	500 A A
	245/40ZR18	97W	-	8.0-8.5-9.5	8 1/2J	1609	49	500 A A
	245/45ZR18	100W/Y	-	7.5-8.0-9.0	8J	1764	49	500 A A
	245/50ZR18	100W	-	7.0-7.5-8.5	7 1/2J	1764	44	500 A A
	245/55ZR18	103W	-	7.0-7.5-8.5	7 1/2J	1929	44	500 A A
	255/35ZR18	94W	-	8.5-9.0-10.0	9 J	1477	49	500 A A
	255/40ZR18	99W	-	8.5-9.0-10.0	9J	1709	49	500 A A
	255/55ZR18	109W	-	7.0-8.0-9.0	8J	2271	49	500 A A
	265/35ZR18	97W	-	9.0-9.5-10.5	9 1/2 J	1609	49	500 A A
19"	195/50R19	88 H	-	5.5-6.0-7.0	6J	1235	44	500 A A
	225/40ZR19	93W	-	-	8J	1433	49	500 A A
	225/45ZR19	96W	-	7.0-7.5-8.5	7 1/2 J	1565	49	500 A A
	225/55R19	103XL/V	-	6.0-7.0-8.0	7J	1929	50	500 A A
	235/35ZR19	91W	-	-	8 1/2J	1356	49	500 A A
	235/40ZR19	96W	-	8.0-8.5-9.5	8 1/2J	1565	49	500 A A
	235/45ZR19	99W	-	7.5-8.0-9.0	8J	1709	49	500 A A
	235/50ZR19	103W	-	6.5-7.5-8.5	7 1/2J	1929	49	500 A A
	235/55R19	105V	-	6.5-7.5-8.5	7 1/2J	2039	49	500 A A
	235/65R19	109 V	-	-	7J	2271	50	500 A A
	245/35ZR19	97W	-	8.0-8.5-9.5	8 1/2J	1609	49	500 A A
	245/40ZR19	98W/Y	-	8.0-8.5-9.5	8 1/2J	1653	49	500 A A
	245/45ZR19	102W	-	7.5-8.0-9.0	8 J	1874	49	500 A A
	245/50ZR19	105XL/W	-	7.0-7.5-8.5	7 1/2J	2039	50	500 A A
245/55ZR19	103W	-	7.0-7.5-8.5	7 1/2J	1929	44	500 A A	
255/35ZR19	96W	-	-	9J	1565	49	500 A A	
255/40ZR19	100W	-	8.5-9.0-10.0	9J	1764	49	500 A A	
255/45ZR19	104W	-	8.0-8.5-9.5	8 1/2J	1984	49	500 A A	
255/55ZR19	111W	-	-	8J	2403	49	500 A A	
265/30ZR19	93W	-	-	9 1/2J	1433	49	500 A A	

SPORT A/S

**SPORT A/S**

Wheel Dia.	TIRE SIZE	LI / SR	PLY	AMERICAN STANDARD FOR THE RIM	REC RIM (MEASURING RIM) WIDTH (in.)	MAX LOAD (lbs)	MAX PSI	UTQG
19"	265/35ZR19	98XL/Y	-	-	9 1/2J	1653	50	500 A A
	265/50ZR19	110XL/W	-	-	8 1/2J	2337	49	500 A A
	275/30ZR19	96W	-	9.0-9.5-10.0	9 1/2J	1565	49	500 A A
	275/35ZR19	100W	-	-	9 1/2J	1764	49	500 A A
	275/40ZR19	101Y	-	9.0-9.5-11.0	9 1/2J	1819	44	500 A A
	275/55R19	111V	-	-	8 1/2J	2403	44	500 A A
20"	225/35ZR20	93W	-	7.5-8.0-9.0	8J	1433	49	500 A A
	235/35ZR20	92XL/Y	-	-	8 1/2J	1389	50	500 A A
	235/45ZR20	100XL/W	-	7.5-8.0-9.0	8J	1764	50	500 A A
	235/50ZR20	104XL/W	-	-	7 1/2J	1984	50	500 A A
	235/55ZR20	102W	-	6.5-7.5-8.5	7 1/2J	1874	44	500 A A
	245/35ZR20	95W	-	-	8 1/2J	1521	49	500 A A
	245/40ZR20	99W/Y	-	8.0-8.5-9.5	8 1/2J	1709	49	500 A A
	245/45ZR20	103W	-	7.5-8.0-9.0	8J	1929	49	500 A A
	255/35ZR20	97W	-	8.5-9.0-10.0	9 J	1609	49	500 A A
	255/45R20	105W	-	8.0-8.5-9.5	8 1/2J	2039	49	500 A A
	255/50ZR20	109V	-	7.0-8.0-9.0	8 J	2271	49	500 A A
	255/55R20	110H	-	7.0-8.0-9.0	8J	2337	49	500 A A
	265/45ZR20	108W	-	-	9 J	2205	49	500 A A
	265/50R20	111V	-	7.5-8.5-9.5	8 1/2J	2403	49	500 A A
	275/30ZR20	97W	-	9.0-9.5-10.0	9 1/2J	1609	49	500 A A
	275/35ZR20	102W	-	9.0-9.5-11.0	9 1/2J	1874	49	500 A A
	275/40ZR20	106W	-	9.0-9.5-11.0	9 1/2 J	2094	49	500 A A
	275/50ZR20	113XL/Y	-	-	8 1/2J	2535	50	500 A A
	285/30ZR20	99XL/Y	-	9.5-10.0-10.5	10J	1709	50	500 A A
	285/35ZR20	104XL/W	-	9.5-10.0-11.0	10J	1984	49	500 A A
295/40ZR20	110XL/W	-	10.0-10.5-11.5	10 1/2J	2337	49	500 A A	
305/30ZR20	103XL/W	-	7.0-8.5-9.0	11 J	1929	49	500 A A	
315/35ZR20	110W	-	10.5-11.0-12.5	11 J	2337	49	500 A A	
21"	245/35ZR21	96XL/Y	-	-	8 1/2J	1565	50	500 A A
	255/35ZR21	98 XLY	-	-	9J	1653	50	500 A A
	255/40ZR21	102XLY	-	-	9J	1874	50	500 A A

**SPORT A/S**

Wheel Dia.	TIRE SIZE	LI / SR	PLY	AMERICAN STANDARD FOR THE RIM	REC RIM (MEASURING RIM) WIDTH (in.)	MAX LOAD (lbs)	MAX PSI	UTQG
21"	265/35ZR21	101XL/Y	-	-	9 1/2J	1819	50	500 A A
	265/40ZR21	105XL/Y	-	-	9 1/2J	2039	50	500 A A
	265/45R21	104 Y	-	8.5-9.0-10.0	9J	1984	44	500 A A
	275/35ZR21	103XL/Y	-	-	9 1/2J	1929	50	500 A A
	275/40ZR21	109XL/Y	-	-	9 1/2J	2271	50	500 A A
	275/45ZR21	110XL/Y	-	-	9J	2337	50	500 A A
	285/30ZR21	100XL/Y	-	-	10J	1764	50	500 A A
	285/35ZR21	108XL/Y	-	-	10J	2205	50	500 A A
	285/40ZR21	109XL/Y	-	-	10J	2271	50	500 A A
	285/45ZR21	113XL/W	-	-	9 1/2J	2535	50	500 A A
	295/30ZR21	102XLW	-	-	10 1/2J	1874	50	500 A A
	295/35ZR21	107XL/Y	-	-	10 1/2J	2149	50	500 A A
	295/40ZR21	111XL/Y	-	-	10 1/2J	2403	50	500 A A
	315/30ZR21	105XL/Y	-	-	11J	2039	50	500 A A
315/35ZR21	111XL/Y	-	-	11J	2403	50	500 A A	
315/40ZR21	111Y	-	-	11J	2403	44	500 A A	
325/30ZR21	110XL/Y	-	-	11 1/2J	2337	50	500 A A	
22"	255/30ZR22	95W	-	-	9 J	1521	49	500 A A
	265/35ZR22	102XL/W	-	-	9 1/2J	1874	49	500 A A
	275/35ZR22	107XL/Y	-	-	9 1/2J	2149	50	500 A A
	275/40ZR22	108XL/Y	-	-	9 1/2J	2205	50	500 A A
	275/50R22	115XL/H	-	7.5-8.5-9.5	8 1/2J	2679	50	500 A A
	285/35ZR22	106W	-	-	10J	2094	49	500 A A
	285/40ZR22	110XL/Y	-	-	10J	2337	50	500 A A
	285/45R22	114 V	-	9.0-9.5-10.5	9 1/2J	2601	50	500 A A
	295/25ZR22	97XLW	-	-	10 1/2J	1609	50	500 A A
	295/30ZR22	110XL/Y	-	-	10 1/2J	2337	50	500 A A
	305/25ZR22	99XLW	-	-	11J	1709	50	500 A A
	315/30ZR22	107XL/Y	-	-	11J	2149	50	500 A A
	315/35ZR22	111XL/Y	-	-	11J	2403	50	500 A A
	325/40R22	114 W	-	-	11 1/2J	2601	44	500 A A
23"	285/40R23	111XLW	-	-	10J	2403	50	500 A A

Tire sizes, technical data and product availability are subject to change. Please see americanroadstar.com for the most up-to-date information.



**COMING SOON RUN FLAT**

16"	195/55R16	17"	205/45R17
	205/55R16		205/50R17
	205/55R17		
	225/45R17		
	225/50R17		
	225/55R17		

**RUN FLAT** 



**COMING SOON RUN FLAT**

18"	205/40R18	19"	225/40R19	20"	245/35R20
	225/40R18		225/45R19		245/40R20
	225/45R18		235/45R19		245/45R20
	225/50R18		235/55R19		255/45R20
	235/50R18		245/40R19		275/30R20
	235/55R18		245/45R19		275/35R20
	235/60R18	245/50R19	275/40R20		
	245/40R18	255/35R19	275/45R20		
	245/45R18	255/50R19	315/35R20		
	245/50R18	265/50R19	275/40R21		
21"	255/35R18	275/35R19	275/45R21		
	255/40R18	275/40R19	285/35R21		
			315/35R21		
			275/40R22		
22"			315/35R22		

**RUN FLAT** 



- HIGH STABILITY CANTERING RIB**  
The solid rib in the center of the tire ensures straight-line driving stability
- WET GRIP GROOVE DESIGN**  
Four wide, longitudinal grooves channel road water, while lateral grooves work to direct it out from under the tire
- LOW TREAD WEAR SHOULDER DESIGN**  
The shoulder is integrated with heat-resisting bars to keep the tread blocks stable and protect them from irregular wear. For the same reason, the design also improves high-speed cornering stability
- FUEL-SAVING TREAD COMPOUND**  
The American Roadstar Run Flat advanced tread compound reduces rolling resistance, which helps boost fuel efficiency and lower exhaust emissions
- QUIET-RIDE PITCH ALIGNMENT**  
Optimized tread pitch width and alignment for quiet resonance and reduced road noise

**RUN FLAT** 



- OPTIMIZED TREAD DESIGN**  
Our computer-aided design has optimized the tread pitch and alignment which reduces road noise levels at higher speeds
- WET-GRIP SIPES AND GROOVES**  
Added sipes and grooves improve aquaplaning resistance and provide better handling on wet roads
- DRY GRIP**  
Tread design creates a much larger contact area allowing better stability, cornering and control
- ADVANCED TREAD COMPOUND**  
Advanced silica tread compound boosts rolling resistance and helps improve fuel efficiency
- LATERAL AND LONGITUDINAL GROOVES**  
Deliver smooth handling and better control on dry and wet roads

**RUN FLAT** 

**Additional Sizes Coming Soon!**

**TOURING**  
All-Season Tires

**AMERICAN ROADSTAR PRO A/S**



- Sizes - 14, 15, 16, 17 & 18" Rim Diameters 60, 65 & 70 Series Aspect Ratio
- 500 U.T.Q.G.
- 10/32 Tread Depth

- Uniquely Wide Flat Tread Radius
- Produces excellent steering progression and ride comfort.
- Jointless Nylon Band
- Increases strength in the high stress shoulder area.
- 2 Wide Steel Belts
- Strengthen the overall tread area.
- Provides stability, excellent wear character & long mileage.
- 9 more sizes on the way



**PRO A/S**

Wheel Dia.	TIRE SIZE	LI / SR	PLY	AMERICAN STANDARD FOR THE RIM	REC RIM (MEASURING RIM) WIDTH (in.)	MAX LOAD (lbs)	MAX PSI	UTQG
14"	175/65R14	82H	-	5.0-6.0	5J	1047	44	500 A A
	175/70R14	88H	-	4.5-5.0-6.0	5J	1235	49	500 A A
	185/65R14	86H	-	5.0-5.5-6.5	5 1/2J	1168	44	500 A A
	185/70R14	88H	-	4.5-5.5-6.0	5 1/2J	1235	44	500 A A
	195/70R14	91H	-	5.0-6.0-6.5	6J	1356	44	500 A A
	205/70R14	98H	-	5.0-6.0-7.0	6J	1653	49	500 A A
15"	175/65R15	84H	-	5.0-6.0	5J	1102	44	500 A A
	185/60R15	84H	-	5.0-5.5-6.5	5 1/2J	1102	44	500 A A
	185/65R15	88H	-	5.0-5.5-6.5	5 1/2J	1235	44	500 A A
	195/60R15	88H	-	5.5-6.0-7.0	6J	1235	44	500 A A
	195/65R15	91H	-	5.5-6.0-7.0	6J	1356	44	500 A A
	205/60R15	91V	-	5.5-6.0-7.5	6J	1356	44	500 A A
	205/65R15	94H	-	5.5-6.0-7.5	6J	1477	44	500 A A
	205/70R15	96H	-	5.0-6.0-7.0	6J	1565	44	500 A A
	215/65R15	100H	-	6.0-6.5-7.5	6 1/2J	1764	49	500 A A
	215/70R15	98T	-	5.5-6.5-7.0	6 1/2J	1653	44	500 A A
16"	225/70R15	100T	-	6.0-6.5-7.5	6 1/2J	1764	44	500 A A
	185/60R16	86H	-	5.0-5.5-6.5	5 1/2J	1168	44	500 A A
	205/60R16	96V	-	5.5-6.0-7.5	6J	1565	49	500 A A
	205/65R16	95V	-	5.5-6.0-7.5	6J	1521	44	500 A A
	205/70R16	97H	-	5.0-6.0-7.0	6J	1609	44	500 A A
	215/60R16	95V	-	6.0-6.5-7.5	6 1/2J	1521	44	500 A A
	215/65R16	102H	-	6.0-6.5-7.5	6 1/2J	1874	49	500 A A
	225/60R16	98H	-	6.0-6.5-8.0	6 1/2J	1653	44	500 A A
	225/65R16	100H	-	6.0-6.5-8.0	6 1/2J	1764	44	500 A A
17"	235/65R16	107H	-	6.5-7.0-8.5	7J	2149	49	500 A A
	215/60R17	100H	-	6.0-6.5-7.5	6 1/2J	1764	49	500 A A
	215/65R17	99H	-	6.0-6.5-7.5	6 1/2J	1709	44	500 A A
18"	225/60R17	99V	-	6.0-6.5-8.0	6 1/2J	1709	44	500 A A
	225/60R18	104V	-	6.0-6.5-8.0	6 1/2J	1964	49	500 A A

Tire sizes, technical data and product availability are subject to change. Please see americanroadstar.com for the most up-to-date information.



**ALL-SEASON TOURING  
S.U.V. & Crossover H/T Tires**



- S.U.V. Sizes - 15, 16, 17, 18, 19 & 20" Rim Diameters 55, 60, 65, 70 & 75 Series Aspect Ratio
- 600 U.T.Q.G.
- 10, 11 & 13/32 Tread Depth
- Uniquely Wide & Flat Tread Radius Produces excellent steering progression and ride comfort.
- High Rubber to void ratio with variable shaped tread block elements. Produces great wear character and long mileage. Tread block noise is cancelled out creating sound comfort.
- Jointless Nylon Band Spiral wound for uniformity Increases strength in the high stress shoulder area.
- 2 Wide Steel Belts Strengthen the overall tread area. Provides stability, excellent wear character & long mileage.
- More sizes on the way



**H/T**

Wheel Dia.	TIRE SIZE	LI / SR	PLY	AMERICAN STANDARD FOR THE RIM	REC RIM (MEASURING RIM) WIDTH (in.)	MAX LOAD (lbs)	MAX PSI	UTQG	
15"	235/75R15	109T	-	6.0-6.5-8.0	6 1/2J	2271	49	600 A B	
	215/70R16	100H	-	5.5-6.5-7.0	6 1/2J	1764	44	600 A B	
	225/70R16	103T	-	6.0-6.5-7.5	6 1/2J	1929	44	600 A B	
	225/75R16	104T	-	7.5-8.5-10.0	6J	1984	44	600AB	
	235/70R16	106H	-	6.0-7.0-8.0	7J	2094	44	600 A B	
	245/70R16	111T	-	6.5-7.0-8.0	7J	2403	49	600 A B	
	245/75R16	111T	-	6.5-7.0-8.0	7J	2403	44	600 A B	
	255/70R16	111T	-	6.5-7.5-8.5	7 1/2J	2403	44	600 A B	
	265/70R16	112H	-	7.0-8.0-9.0	8J	2469	44	600 A B	
	265/75R16	116T	-	7.0-7.5-9.0	7 1/2J	2756	44	600 A B	
	LT215/85R16	115/112Q	-	5.5-6.0-7.0	6J	2680	80	-	
	LT225/75R16	115/112S	10PR/LRE	6.0-7.5	6J	2680	80	-	
16"	LT235/85R16	120/116R	10PR/LRE	6.0-6.5-7.5	6 1/2J	3042	80	-	
	LT245/75R16	120/116S	10PR/LRE	6.5-7.0-8.0	7J	3042	80	-	
	LT265/75R16	123/120R	10PR/LRE	7.0-7.5-9.0	7 1/2J	3415	80	-	
	17"	225/65R17	102T	-	6.0-6.5-8.0	6 1/2J	1874	44	600 A B
		235/65R17	108H	-	6.5-7.0-8.5	7J	2205	49	600 A B
		245/65R17	107H	-	7.0-8.5	7J	2149	44	600 A B
		245/70R17	114H	-	6.5-7.0-8.0	7J	2601	49	600 A B
		255/65R17	110H	-	7.0-7.5-9.0	7 1/2J	2337	44	600 A B
		255/70R17	112H	-	6.5-7.5-8.5	7 1/2J	2469	44	600 A B
		265/65R17	116H	-	7.5-8.0-9.5	8J	2756	49	600 A B
		265/70R17	115H	-	7.0-8.0-9.0	8J	2679	44	600 A B
		LT235/80R17	120/117Q E-PLY	10PR/LRE	6.0-6.5-7.5	6 1/2J	3085	80	-
LT245/70R17		119/116_S	10PR/LRE	6.5-7.0-8.0	7J	2998	80	-	
LT245/75R17		121/118S	10PR/LRE	6.5-7.0-8.0	7 J	3197	80	-	
LT265/70R17		121/118S	10PR/LRE	7.0-8.0-9.0	8J	3197	80	-	
18"	235/55ZR18	104W	-	6.5-7.5-8.5	7 1/2J	1984	49	600 A B	
	235/60R18	107V	-	6.5-7.0-8.5	7J	2149	49	600 A B	
	235/65R18	110H	-	6.5-7.0-8.5	7J	2337	49	600 A B	

**ALL-SEASON TOURING  
S.U.V. & Crossover H/T Tires**



- S.U.V. Sizes - 15, 16, 17, 18, 19 & 20" Rim Diameters 55, 60, 65, 70 & 75 Series Aspect Ratio
- 600 U.T.Q.G.
- 10, 11 & 13/32 Tread Depth
- Uniquely Wide & Flat Tread Radius Produces excellent steering progression and ride comfort.
- High Rubber to void ratio with variable shaped tread block elements. Produces great wear character and long mileage. Tread block noise is cancelled out creating sound comfort.
- Jointless Nylon Band Spiral wound for uniformity Increases strength in the high stress shoulder area.
- 2 Wide Steel Belts Strengthen the overall tread area. Provides stability, excellent wear character & long mileage.
- More sizes on the way

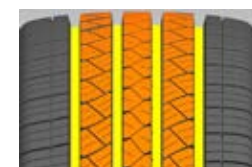


**H/T**

Wheel Dia.	TIRE SIZE	LI / SR	PLY	AMERICAN STANDARD FOR THE RIM	REC RIM (MEASURING RIM) WIDTH (in.)	MAX LOAD (lbs)	MAX PSI	UTQG
18"	245/60R18	105H	-	7.0-8.5	7J	2039	44	600 A B
	255/65R18	111T	-	7.0-7.5-9.0	7 1/2J	2403	44	600 A B
	255/70R18	113H	-	6.5-7.5-8.5	7 1/2J	2535	44	600 A B
	265/60R18	114V	-	7.5-8.0-9.5	8J	2601	49	600 A B
	265/65R18	114H	-	7.5-8.0-9.5	8J	2601	44	600 A B
	265/70R18	116H	-	7.0-8.0-9.0	8J	2756	44	600 A B
	275/65R18	116H	-	7.5-8.0-9.5	8J	2756	44	600 A B
	LT275/65R18	123/120_S	10PR/LRE	8.0-9.5	8J	3417	80	-
LT275/70R18	125/122_S	10PR/LRE	7.0-8.0-9.0	8J	3638	80	-	
19"	255/60R19	109H	-	/	7 1/2J	2271	44	600 A B
20"	245/50ZR20	102W	-	7.0-7.5-8.5	7 1/2J	1874	44	600 A B
	245/60R20	107H	-	7.0-8.5	7J	2149	44	600 A B
	275/60R20	115V	-	7.5-8.0-9.5	8J	2679	44	600 A B

Tire sizes, technical data and product availability are subject to change. Please see americanroadstar.com for the most up-to-date information.

**PATTERN INTRODUCTIONS**

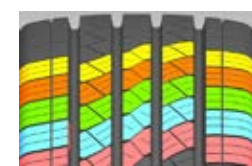


Four wide longitudinal grooves enhance water evacuation, improving cornering and handling performance on wet roads.

3 directional continuous center ribs ensure straight driving stability. Cross-interlocking groove design provides reliable grip and reduces noise. Sharp edges of the lateral grooves cut through water film effectively, and resist hydroplaning of the tire.



Optimized depth of main grooves ensure high mileage. Optimal ratio of tread rib ensures efficient ground contact area while ensuring tire load carrying capacity. Depth of the shoulder grooves design, effectively reduce the tire heat, providing a reliable load durability.



Optimization of 5 variable pitch sequence, effectively reduces the noise resonance, improving comfort. Optimized pitch width, effectively improves the load carrying capacity while reducing noise.

**HIGHWAY-COMMERCIAL**  
**All-Season Tires**



- Symmetrical/Non-Directional Commercial Hwy A/S
- Speed Ratings – Q, R – 6 PR
- 65-75 Series, 16 in. rim size

- 4 Wide Circumferential Ribs for outstanding strength and load support
- 3 Zigzag Circumferential grooves for water evacuation and all-season traction.
- Made in Thailand
- Designed for drivers of commercial pick-up trucks and vans for rugged all-season commercial use



**VAN**

Wheel Dia.	TIRE SIZE	LI / SR	PLY	AMERICAN STANDARD FOR THE RIM	REC RIM (MEASURING RIM) WIDTH (in.)	MAX LOAD (lbs)	MAX PSI	UTQG
16"	195/75R16C	110/108R	10PR/LRE	-	5 1/2J	2335	77	-
	235/65R16C	121/119R	10PR/LRE	-	7J	3195	83	-
	285/65R16C	128R	10PR/LRE	-	8 1/2J	3970	77	-

Tire sizes, technical data and product availability are subject to change. Please see americanroadstar.com for the most up-to-date information.



**ALL-TERRAIN  
A/T Tires**



- SUV Metric Sizes - LT Metric & High Float Sizes 15, 16, 17, 18, 20 & 22" Rim Diameters
- 40, 45, 55, 60, 70 & 75 Series Aspect Ratios
- 12, 13, 15, 16 & 17/32 Tread Depth
- Super Wide & Flat Tread Radius Produces excellent steering progression and ride comfort.
- Attractive Marked Tread Design Produces great traction for all weather and road surfaces. Wrap around shoulder elements are profound and functional.
- Jointless Nylon Band Spiral wound for uniformity Increases strength in the high stress shoulder area.
- 2 Wide Steel Belts Strengthen the overall tread area. Provides stability, excellent wear character & long mileage.



**A/T**

Wheel Dia.	TIRE SIZE	LI / SR	PLY	AMERICAN STANDARD FOR THE RIM	REC RIM (MEASURING RIM) WIDTH (in.)	MAX LOAD (lbs)	MAX PSI	UTQG
15"	31X10.50R15LT	109S	6PR/LRC	7.0-8.5-9.0	8 1/2J	2270	50	-
16"	265/70R16	112T	-	7.0-8.0-9.0	8J	2469	44	500AA
	LT245/75R16	120/116R	10PR/LRE	6.5-7.0-8.0	7J	3042	80	-
	LT265/75R16	123/120R	10PR/LRE	7.0-7.5-9.0	7 1/2J	3415	80	-
	LT285/75R16	126/123R	10PR/LRE	7.5-8.0-9.5	8J	3750	80	-
17"	245/75R17	110H	-	6.5-7.0-8.0	7J	2337	44	500AA
	255/75R17	115T	-	6.5-7.0-8.5	7J	2679	44	500AA
	265/65R17	116T	-	7.5-8.0-9.5	8J	2756	50	500AA
	265/70R17	113T	-	7.0-8.0-9.0	8J	2535	44	500AA
	LT245/75R17	121/118_S	10PR/LRE	6.5-7.0-8.0	7J	3195	80	-
	LT265/70R17	121/118S	10PR/LRE	7.0-8.0-9.0	8J	3195	80	-
	LT285/70R17	121/118Q	10PR/LRE	7.5-8.5-9.5	8 1/2J	3195	80	-
18"	225/55R18	102 V	-	6.0-7.0-8.0	7J	1874	50	500AA
	265/65R18	114H	-	7.5-8.0-9.5	8J	2601	44	500AA
	275/65R18	114T	-	7.5-8.0-9.5	8J	2601	44	500AA
	LT265/70R18	124/121_S	10PR/LRE	7.0-8.0-9.0	8J	3527	80	-
	LT275/65R18	123/120_S	10PR/LRE	8.0-9.5	8J	3417	80	-
	LT275/70R18	125/122S	10PR/LRE	7.0-8.0-9.0	8J	3640	80	-
20"	275/55R20	117H	-	7.5-8.5-9.5	8 1/2J	2833	49	500AA
	275/60R20	119H	-	7.5-8.0-9.5	8J	2998	49	500AA
	LT265/60R20	121/118_S	10PR/LRE	8.0-9.5	8J	3197	80	-
	LT275/65R20	126/123S	10PR/LRE	8.0-9.5	8J	3750	80	-
	LT285/55R20	122/119S	10PR/LRE	8.5-9.0-10.0	9J	3305	80	-
22"	285/45R22	116H	-	9.0-9.5-10.5	9 1/2J	2756	49	500AA

Tire sizes, technical data and product availability are subject to change. Please see americanroadstar.com for the most up-to-date information.

**PATTERN INTRODUCTIONS**



- Strong Pattern Block Design Strong central pattern blocks ensure stable handling performance and powerful control force under off-road conditions. Rugged blocks can prevent cutting, scratching and impact damage.
- Solid Square Shoulder Strong shoulder provide adequate dry traction and turning performance.



- Excellent Drainage Performance Four wide longitudinal grooves can evacuate water effectively, enhance handling and steering on wet road surface .
- Special Multi-Angle Sipe Design Irregular sipes design can reduce noise and improve grip on snow-covered roads effectively, to ensure excellent control performance.

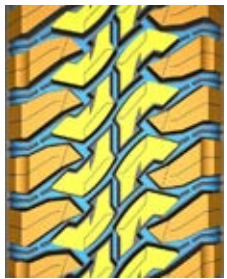
**MUD-TERRAIN  
M/T Tires**



- SUV Metric Sizes - High Float Sizes 17, 18, 20 & 22" Rim Diameters
- 50, Series Aspect Ratios & High Float
- 19/32 Tread Depth
- Moderated Rubber to Void Ratio Reduces noise, Increases Wear character and Mileage. Attractive Marked Tread Design Produces great traction for all surface conditions. Aggressive & Profound Wrap Around Shoulder Elements are functional.
- 3 Polyester Body Plies for strength and resilience
- 2 Wide Steel Belts Strengthen the overall tread area. Provides stability, excellent wear character & long mileage.
- Jointless Nylon Band Spiral wound for uniformity Increases strength in the high stress shoulder area.

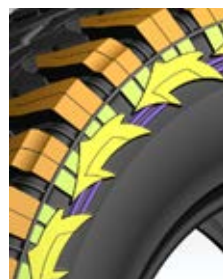


**PATTERN INTRODUCTIONS**



- Excellent Driving Performance The optimum ratio of rubber and void on the tread and the special stepped edge treatment removal of dirty under extreme off-road conditions effectively, ensuring the excellent driving performance.
- Water And Snow Drainage Performance Wide and deep pattern groove design

enhances the anti-skip performance of tires under rainy and snowy road greatly.



- Excellent Gripping Design Solid square shoulder increases the contact area between tread and ground greatly, improves the grip and bearing capacity of wet and dry road, making more stable driving.
- Wearing And Stabbing Resistance Aggressive sidewall design prevents damage and enhances grip when in deep mud or rock climbing.

**M/T**

Wheel Dia.	TIRE SIZE	LI / SR	PLY	AMERICAN STANDARD FOR THE RIM	REC RIM (MEASURING RIM) WIDTH (in.)	MAX LOAD (lbs)	MAX PSI	UTQG
16"	LT265/75R16	123/120Q	10PR/LRE	7.0-7.5-9.0	7 1/2J	3415	80	-
	265/70R17	115T	-	7.0-8.0-9.0	8J	2679	44	-
	LT265/70R17	121/118Q	10PR/LRE	7.0-8.0-9.0	8J	3195	80	-
17"	LT285/70R17	121/118Q	10PR/LRE	7.5-8.5-9.5	8 1/2J	3195	80	-
	37X12.50R17LT	124Q	8PR/LRD	8.0-10.0-10.5	10J	3525	50	-
	37X13.50R17LT	121Q	10PR/LRE	9.0-11.0-11.5	11J	3195	65	-
	33X12.50R17LT	120Q	10PR/LRE	8.5-10.0-11.0	10J	3085	65	-
	35X12.50R17LT	125Q	10PR/LRE	8.0-10.0-10.5	10J	3640	65	-
18"	LT275/70R18	125/122Q	10PR/LRE	7.0-8.0-9.0	8J	3640	80	-
	LT295/70R18	129/126Q	10PR/LRE	7.5-8.5-10.0	8 1/2J	4080	80	-
	33X12.50R18LT	122Q	12PR/LRF	8.5-10.0-11.0	10J	3305	80	-
	35X12.50R18LT	128Q	12PR/LRF	8.5-10.0-11.0	10J	3970	80	-
20"	LT285/55R20	122/119Q	10PR/LRE	8.5-9.0-10.0	9J	3305	80	-
	LT305/55R20	121/118S	10PR/LRE	9.0-9.5-11.0	9 1/2J	3195	65	-
	33X12.50R20LT	119Q	12PR/LRF	8.5-10.0-11.0	10J	3000	80	-
	35X12.50R20LT	125Q	12PR/LRF	8.5-10.0-11.0	10J	3640	80	-
22"	LT285/55R20	122/119Q	10PR/LRE	8.5-9.0-10.0	9J	3305	80	-
	33X12.50R22LT	114Q	12PR/LRF	8.5-10.0-11.0	10J	2600	80	-
	35X12.50R22LT	121Q	12PR/LRF	8.5-10.0-11.0	10J	3195	80	-
	35X13.50R22LT	121Q	10PR/LRE	-	11J	3195	65	-
24"	37X13.50R22LT	129Q	10PR/LRE	9.5-11.0-12.0	11J	4080	65	-
	35X13.50R24LT	126Q	12PR/LRF	11.5-12.0-13.5	12J	3750	80	-
	37X13.50R24LT	129Q	12PR/LRF	9.5-11.0-12.0	11J	4080	80	-

Tire sizes, technical data and product availability are subject to change. Please see americanroadstar.com for the most up-to-date information.

**RUGGED-TERRAIN R/T Tires**



Super aggressive style with refined road manners. Large laterally oriented blocks provide extra biting grip with stepped-edge and bold sidewall elements. Lateral groove and zig-zag valleys create channels for water evacuation and snow traction. With a wide flat contact patch, the stable block design gives constant contact with the road ensuring smooth driving, aggressive grip in handling and outstanding all-weather performance on the road. Off-road, the many biting elements of the sidewalls, blocks and grooves will make short work of rocks, mud, sand or snow.



**R/T**

Wheel Dia.	TIRE SIZE	LI / SR	PLY	AMERICAN STANDARD FOR THE RIM	REC RIM (MEASURING RIM) WIDTH (in.)	MAX LOAD (lbs)	MAX PSI	UTQG
16"	LT265/75R16	123/120Q	10PR/LRE	7.0-7.5-9.0	7 1/2J	3415	80	-
17"	33X12.50R17LT	120Q	10PR/LRE	8.5-10.0-11.0	10J	3085	65	-
	35X12.50R17LT	121Q	10PR/LRE	8.0-10.0-10.5	10J	3195	65	-
	265/70R17	115T	-	7.0-8.0-9.0	8J	2679	44	500AA
	LT265/70R17	121/118Q	10PR/LRE	7.0-8.0-9.0	8J	3195	80	-
	LT285/70R17	121/118Q	10PR/LRE	7.5-8.5-9.5	8 1/2J	3195	80	-
18"	LT315/70R17	121/118Q	10PR/LRE	8.0-9.5-10.5	9 1/2J	3195	65	-
	LT275/65R18	123/120Q	10PR/LRE	8.0-9.5	8J	3415	80	-
	LT275/70R18	125/122Q	10PR/LRE	7.0-8.0-9.0	8J	3640	80	-
20"	LT295/70R18	129/126Q	10PR/LRE	7.5-8.5-10.0	8 1/2J	4080	80	-
	33X12.50R20LT	119Q 12PLY	12PR/LRF	8.5-10.0-11.0	10J	3000	80	-
	35X12.50R20LT	121Q	10PR/LRE	8.5-10.0-11.0	10J	3195	65	-
	275/55R20	117T	-	7.5-8.5-9.5	8 1/2J	2833	50	500 A A
	275/60R20	115T	-	7.5-8.0-9.5	8J	2679	44	500AA
22"	LT285/55R20	122/119Q	10PR/LRE	8.5-9.0-10.0	9J	3305	80	-
	LT305/55R20	121/118Q	10PR/LRE	9.0-9.5-11.0	9 1/2J	3195	65	-
	33X12.50R22LT	114Q	12PR/LRF	8.5-10.0-11.0	10J	2600	80	-
24"	35X12.50R22LT	121Q	12PR/LRF	8.5-10.0-11.0	10J	3195	80	-
	35X12.50R24LT	116Q	12PR/LRF	10.0-10.5-12.0	10 1/2J	2755	80	-

**PATTERN INTRODUCTIONS**



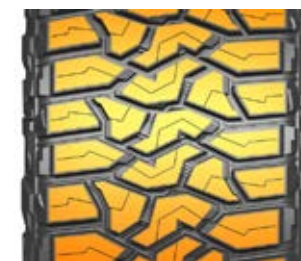
**Lateral Grooves and Zigzag longitudinal design**

Provide aggressive traction in rain, mud, snow and sand. Rock-crawler looks with impeccable on-highway manners



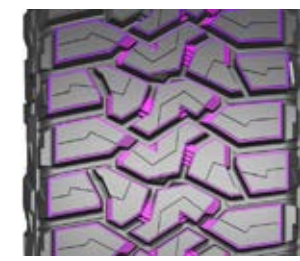
**Concave and convex sidewall design**

Concave and convex sidewall extend from the shoulder blocks down to the sidewall for extra off-road traction.



**Stable block design**

promotes even wear while providing a consistent contact patch and large outside tread elements for great dry handling



**Stepped block edges, stepped block ties**

Reduce irregular wear, fight stone retention and create additional biting surfaces for traction on wet surfaces, snow and Variable step shape block design for extra bite to get more traction.



**ARS 1000 ARS 1100**

STEER ALL-POSITION



**ARS 2000 ARS 2200**

CLOSED-SHOULDER DRIVE



**ARS 3000**

REGIONAL  
OPEN - SHOULDER DRIVE



**ARS 4000**

TRAILER



**ARS 5000**

REGIONAL  
ON-OFF ROAD / MIXED-SERVICE



**ARS 6000**

REGIONAL  
PICK-UP/DELIVERY / ALL-POSITION



**ARS SERIES**  
COMMERCIAL TBR

**AMERICAN  
ROAD STAR  
TIRES**

**COMMERCIAL TRUCK TIRES**



**ARS 1000 - ARS 1100 / ALL-POSITION**

ITEM #	SIZE	PLY	DEPTH (1/32")	LOAD INDEX	SPEED INDEX	O.D.	S.W.	R.W.	A.P.	MAX LOAD SINGLE	MAX LOAD DUAL
ARS1K003	11R22.5	14(G)	18 / 32	144/142	M	41.5	11.0	8.25	105	6175	5840
ARS1K004	11R22.5	16(H)	18 / 32	146/143	M	41.5	11.0	8.25	120	6610	6005
ARS1K001	295/75R22.5	14(G)	18 / 32	144/141	M	39.9	11.7	9.00	110	6175	5675
ARS1K002	295/75R22.5	16(H)	18 / 32	146/143	M	39.9	11.7	9.00	120	6610	6005
ARS1K005	11R24.5	14(G)	18 / 32	146/143	M	43.5	11.0	8.25	105	6610	6005
ARS1K006	11R24.5	16(H)	18 / 32	149/146	M	43.5	11.0	8.25	120	7160	6610
ARS1K101	*285/75R24.5	14(G)	18 / 32	144/141	M	41.3	11.1	8.25	110	6175	5675
ARS1K102	*285/75R24.5	16(H)	18 / 32	147/144	M	41.3	11.1	8.25	120	6780	6175

(\*285/75R24.5) is ARS1100.

Tire sizes, technical data and product availability are subject to change. Please see americanroadstar.com for the most up-to-date information.

**STEER / ALL-POSITION**



**ARS 1000 ARS 1100**

ARS1000- ARS1100 - Premium Fuel-Efficient All-Position Specialized tread compound for low rolling resistance 5 Straight ribs with closed shoulders for constant contact and long wear Sipping, cross grooves and wavy channels at bottom of grooves improve wet traction.

220 Tread width



ARS 1000 ARS 1100





**ARS 1000 STEER / ALL-POSITION**

ITEM #	SIZE	PLY	DEPTH (1/32")	LOAD INDEX	SPEED INDEX	O.D.	S.W.	R.W.	A.P.	MAX LOAD SINGLE	MAX LOAD DUAL
TBD	215/75R17.5	14(G)	16 / 32	126/124	M	30.2	8.3	6.00	102	3750	3525
TBD	215/75R17.5	16(H)	16 / 32	135/133	L	30.2	8.3	6.00	123	4805	4540
ARS1K007	225/70R19.5	14(G)	18 / 32	128/126	M	31.9	8.9	6.75	110	3970	3750
ARS1K008	225/70R19.5	16(H)	18 / 32	129/128	M	31.9	8.9	6.75	120	4190	3970
ARS1K009	245/70R19.5	14(G)	18 / 32	133/131	M	33.0	9.8	7.50	110	4540	4300
ARS1K010	245/70R19.5	16(H)	18 / 32	135/133	M	33.0	9.8	7.50	120	4805	4540
ARS1K011	255/70R22.5	16(H)	18 / 32	140/137	M	36.6	10.0	7.50	120	5510	5070

*Tire sizes, technical data and product availability are subject to change. Please see americanroadstar.com for the most up-to-date information.*

**STEER / ALL-POSITION**

**ARS 1000**



ARS1000 Premium Fuel-Efficient All-Position Specialized tread compound for low rolling resistance 5 Straight ribs with closed shoulders for constant contact and long wear Sipping, cross grooves and wavy channels at bottom of grooves improve wet traction.

220 Tread width



**ARS 2000 - ARS 2200 / CLOSED-SHOULDER DRIVE**

ITEM #	SIZE	PLY	DEPTH (1/32")	LOAD INDEX	SPEED INDEX	O.D.	S.W.	R.W.	A.P.	MAX LOAD SINGLE	MAX LOAD DUAL
ARS2K003	11R22.5	16(H)	28 /32	146/143	M	41.9	11	8.25	120	6610	6005
ARS2K004	11R22.5	14(G)	28 /32	144/142	M	41.9	11	8.25	105	6175	5840
ARS2K001	295/75R22.5	14(G)	28 /32	144/141	M	40.4	11.7	9	110	6175	5675
ARS2K002	295/75R22.5	16(H)	28 /32	146/143	M	40.4	11.7	9	120	6610	6005
ARS2K005	11R24.5	14(G)	28 /32	146/143	M	43.9	11	8.25	105	6610	6005
ARS2K006	11R24.5	16(H)	28 /32	149/146	M	43.9	11	8.25	120	7160	6610
ARS2K201	*285/75R24.5	14(G)	28 /32	144/141	M	41.8	11.1	8.25	110	6175	5675
ARS2K202	*285/75R24.5	16(H)	28 /32	147/144	M	41.8	11.1	8.25	120	6780	6175

(\*285/75R24.5) is ARS1100.

Tire sizes, technical data and product availability are subject to change. Please see americanroadstar.com for the most up-to-date information.

**CLOSED-SHOULDER DRIVE**



**ARS 2000 ARS 2200**

ARS2000 - ARS2200 - Closed-Shoulder Drive-Position Specialized tread compound for low rolling resistance closed shoulders for constant contact and long wear Large blocks, sipping, cross grooves to improve wet traction Large inside lugs for improved traction in all conditions Stone ejectors in groove to reduce stone drilling Extra-deep 28/32 tread for maximum mileage. 220 Tread width

ARS 2000 ARS 2200



**ARS 3000 REGIONAL / OPEN - SHOULDER DRIVE**

ITEM #	SIZE	PLY	DEPTH (1/32")	LOAD INDEX	SPEED INDEX	O.D.	S.W.	R.W.	A.P.	MAX LOAD SINGLE	MAX LOAD DUAL
ARS3K01	225/70R19.5	14(G)	18 /32	128/126	N	31.9	8.9	6.75	110	3970	3750
ARS3K02	245/70R19.5	16(H)	17 /32	136/134	N	33.3	9.8	7.5	120	4940	4675

*Tire sizes, technical data and product availability are subject to change. Please see americanroadstar.com for the most up-to-date information.*

**NEW**

**REGIONAL / OPEN - SHOULDER DRIVE**

**ARS3000**



To achieve superior traction in all conditions, the ARS3000 features a block pattern with five staggered circumferential rows of blocks. The dense block design along the centerline of the tire ensures excellent load support, quick turning response, and a good on-center feel. Additionally, the continuous contact design guarantees consistent rubber-to-road contact, resulting in predictable grip and even wear.

For efficient water evacuation and improved wet traction, cross grooves and sipes are incorporated, along with efficient circumferential grooves. This ensures that the tire can perform well even in wet conditions, providing reliable and safe handling.

ARS 3000



**ARS 4000 / TRAILER**

ITEM #	SIZE	PLY	DEPTH (1/32")	LOAD INDEX	SPEED INDEX	O.D.	S.W.	R.W.	A.P.	MAX LOAD SINGLE	MAX LOAD DUAL
ARS4K02	11R22.5	14G	13 /32	148/145	M	41.5	11	8.25	123	6945	6395
ARS4K01	295/75R22.5	14G	13 /32	144/141	M	39.9	11.7	9	110	6175	5675
ARS4K03	11R24.5	14G	13 /32	146/143	M	43.5	11	8.25	105	6610	6005
ARS4K04	285/75R24.5	14G	13 /32	144/141	M	41.3	11.1	8.25	110	6175	5675

Tire sizes, technical data and product availability are subject to change. Please see [americanroadstar.com](http://americanroadstar.com) for the most up-to-date information.

**NEW**

**TRAILER**  
**ARS4000**



The ARS4000 trailer tire features a shallow tread, which is intended to reduce the rate of wear and prevent irregular wear. Though it is used on a non-dynamic axle, the casing construction of the ARS4000 is the same as for tires on other wheel positions, which increases the casing's value for retreading.

Serrated rib edges are incorporated into the design to reduce stress while multiple sipes contribute to excellent long-term wear characteristics. To assist with self-cleaning of the tread, serpentine graduated groove walls are incorporated into the design, helping the tire maintain grip in mud & dirt.

Overall, the shallow tread design of the ARS4000 ensures that the tire performs well and lasts longer, providing reliable and cost-effective tire for trailer applications.

ARS 4000



**ARS 5000 ON-OFF / MIXED-SERVICE ALL-POSITION**

ITEM #	SIZE	PLY	DEPTH (1/32")	LOAD INDEX	SPEED INDEX	O.D.	S.W.	R.W.	A.P.	MAX LOAD SINGLE	MAX LOAD DUAL
ARS5K04	11R22.5	16H	21/32	146/143	N	41.50	11.0	8.25	120	6610	6005
ARS5K01	11R24.5	16H	21/32	149/146	N	43.46	11.0	8.25	120	7160	6610
ARS5K03	275/70R22.5	18J	18/32	148/145	N	37.72	10.9	9	131	6940	6395
ARS5K06	315/80R22.5	20L	20/32	157/154	N	42.36	12.3	9.75	130	9090	8270
ARS5K02	385/65R22.5	20L	19/32	160	M	42.20	15.3	12.25	130	9920	-
ARS5K05	425/65R22.5	20L	21/32	165	N	44.25	16.6	14	120	11400	-

*Tire sizes, technical data and product availability are subject to change. Please see americanroadstar.com for the most up-to-date information.*

**NEW**

**ON-OFF / MIXED-SERVICE ALL-POSITION**  
**ARS5000**



The all-position mixed-service tread design of the ARS5000 is robust and suitable for many on/off-highway applications. The tire features three large zig-zag circumferential grooves that provide excellent traction in a variety of surface conditions. An indented outside shoulder rib, coupled with zig-zag interior ribs, create grabbing surfaces in mud, rock, and sand.

The tire's resilient tread compound promotes long wear even in harsh conditions, making it ideal for rugged mixed-service applications.

ARS 5000



**NEW**

**REGIONAL / ALL-POSITION**  
**ARS6000**



The all-position ARS6000 all-steel radial tire is designed specifically for pick-up/delivery applications, with solid outside ribs that offer strength and resilience to curbing. The undulating circumferential grooves are designed to provide excellent water evacuation, ensuring grip in wet conditions. Additional siping on the interior ribs provides extra biting edges for traction in various surface conditions while serrated center ribs increase traction and reduce irregular wear.

**ARS 6000 REGIONAL / ALL-POSITION**

ITEM #	SIZE	PLY	DEPTH (1/32")	LOAD INDEX	SPEED INDEX	O.D.	S.W.	R.W.	A.P.	MAX LOAD SINGLE	MAX LOAD DUAL
ARS6K01	215/75R17.5	16(H)	16 /32	135/133	L	30.2	8.3	6	123	4805	4540
ARS6K02	235/75R17.5	18J	16 /32	143/141	L	31.4	9.2	6.75	127	6005	5675
ARS6K03	245/70R17.5	18J	16 /32	143/141	K	31.1	9.8	7.5	130	6005	5675

Tire sizes, technical data and product availability are subject to change. Please see [americanroadstar.com](http://americanroadstar.com) for the most up-to-date information.

ARS 6000



# AMERICAN ROAD STAR LIMITED TIRE WARRANTY PLAN

This warranty applies only to tires purchased in the United State on or after October 01, 2018

This Limited Warranty is made by WTD (Wholesale Tire Distributor) & applies to the American Road Star passenger & light truck tires listed on the summary of Limited Warranty Coverage Chart. The original purchaser is entitled to the benefits of this limited warranty unless a warranty exclusion applies or the purchaser has failed to comply with this Limited Warranty's use, maintenance, or tire rotation requirements. This warranty applies only to tires purchased on or after October 01, 2018

### "A. Eligibility for Limited Warranty Coverage

You must be the original purchaser on or after October 01, 2018 of a warranted tire & the tire must have been continuously installed on the vehicle on which it was first installed. Your sales receipt is your proof of purchase & the vehicle upon which the tire was originally installed. This limited tire warranty is not transferable to another vehicle or to another person. This warranty does not cover tires installed on a commercial vehicle or a vehicle put in commercial use. To be & remain eligible for the Tread Life portion of your Limited Warranty, you must present proof that you have rotated the American Road Star tire, in accordance with the prescribed rotation pattern, at least every 3,000 - 4,000 miles following installation. For your convenience, the prescribed tire rotation pattern & a space to record the date & frequency of rotation is provided at the end of this Limited Warranty Booklet."

### "B. Materials and Workmanship Warranty

Selected American Road Star tread patterns (indicated in the warranty chart of this document) are warranted against defects in materials and workmanship and will be replaced free of charge within the first 2/32" wear of original usable tread life, or within 6 months from the period of purchase, whichever comes first. After the 100% replacement term expires and the tire is still within 60 months from the manufacturing date, credit will be determined by the percentage of original tread depth remaining on the tire. Any additional costs of mounting, balancing, installation charges, shipping, and any applicable sales tax or use taxes are not covered."

### "C. Limited Mileage Warranty

Selected American Road Star tread patterns (indicated in this document) are manufactured to protect against premature tread wear. If a tire reaches the end of its usable tread life (2/32") before the stated mileage warranty (indicated in this document) the original purchaser will be issued a comparable American Road Star Tire on a pro-rata basis, based on the percentage of remaining usable tread depth down to the remaining 2/32" tread depth. Tread must be worn down evenly across the face of the tread. In order to maintain this limited warranty, all tires must be rotated at least every 3,000-4,000 miles. Any additional costs of mounting, balancing, installation charges, shipping, and any applicable sales tax or use taxes are not covered. Documentation is required showing alignment, tire rotation records, along with date of installation and removal to maintain tread wear warranty. Tires MUST be rotated 3,000-4,000 miles. Tread must be worn down evenly across the face of the tread."

### "D. Exclusions Not Covered Under This Limited Warranty

- Tires used on RVs (recreational vehicles), Motor Homes, Trailers, or tires used in commercial service.
- Tires that are used in a staggered application where tires on the back of the vehicle are a different size than those on the front.
- Any tire that has any brand information, sizes, or the D.O.T. identification numbers removed intentionally.

- Ride complaints after the first 2/32" of tread wear or replacement of 3 or more tires from the same vehicle will not be accepted.
- Premature/irregular wear due to vehicle mechanical deficiencies.
- Failure to rotate the tires at recommended intervals.
- Road hazard damage including cuts, snags, bruises, punctures, tire repair, impact breaks, etc. (Select tires indicated in this document have coverage under the American Road Star Tire Road Hazard Policy.)
- Any tires on any vehicle that are registered and normally operated outside the U.S.
- Any damage from over/under inflation, tire overloading, fire, theft, and any defective mechanical condition of the vehicle.
- Any damage from incorrect tire mounting/dismounting/ balancing, any incorrect tire application, water or any other material trapped inside the tire during tire mounting.
- Any racing or other misapplication of tire to improper road conditions.
- Environmental ozone or weather cracking after 48 months from tire manufacture date.
- Any accident, fire, chemical corrosion, tire alteration, vandalism, abuse, or running on a flat tire.
- Any tires worn beyond the tire bar wear indicators and less than 2/32".
- Uneven wear in which the tread groove difference is 2/32" or more across the face of the tire.
- Any loss of time or use, inconvenience, any incidental or consequential damage.
- Flat spotting caused by improper storage or brake lock."

### "F. Road Hazard Warranty

American Road Star Brand Tires sold in the US by authorized American Road Star Tire dealers, are assigned a Road Hazard Warranty that protects the consumer against non-repairable damage caused by puncture, snag, cut, bruise or impact break. Typical road hazards are nails, glass, potholes and other debris. If a road hazard damage occurs in the first 6 months of ownership, or first 2/32nds whichever comes first, a replacement will be made with a comparable American Road Star Tire 100% free of charge. If a road hazard damage occurs within the 12 months of purchase or when the tire reaches its first 50% of usable tread depth (4/32nd) whichever comes first, American Road Star Tire Dealer will reimburse 50% of their original costs. Under all circumstances, the cost of mounting, balancing and any other service charges including applicable taxes are required to be paid by the consumer.

What is not covered under the Road Hazard Replacement Program?

- A tire that has failed or damaged due to an accident.
- A tire that has failed or damaged due to vandalism.
- A tire that has repairable damage under Rubber Manufacturers Association (RMA) standards.
- A tire that has failed or damaged due to commercial use.
- A tire that has failed or damaged due to racing or off-road use.
- A tire that has failed or damaged due to the use of snow chains or studs.
- A tire that has failed or damaged due to irregular wear caused by mechanical issues.
- Tires transferred from the vehicle that they were originally installed on.
- A tire that is past 2 years from the date of purchase or first 50% of tread wear, whichever comes 1st.- Run-flat tires are not in the scope of this warranty."

### LIMITED TIRE WARRANTY REGISTRATION NUMBER (To be completed at the time of purchase:)

Date: \_\_\_\_\_ Odometer: \_\_\_\_\_

#### Customer Information:

Name: \_\_\_\_\_

Address: \_\_\_\_\_

City: \_\_\_\_\_ State: \_\_\_\_\_

Phone No.: \_\_\_\_\_

#### Vehicle Information:

Year: \_\_\_\_\_ Make/Model: \_\_\_\_\_

Tire Brand Purchased: \_\_\_\_\_

Tire Size/Pattern: \_\_\_\_\_

Recommended Tire Pressure Front: \_\_\_\_\_ PSI

Recommended Tire Pressure Rear: \_\_\_\_\_ PSI

#### DOT No. Information:

Tire #1 \_\_\_\_\_

Tire #2 \_\_\_\_\_

Tire #3 \_\_\_\_\_

Tire #4 \_\_\_\_\_

#### Tire Removal Information:

Date: \_\_\_\_\_ Odometer: \_\_\_\_\_

Dealer Name: \_\_\_\_\_

Dealer Address: \_\_\_\_\_

Dealer Signature: \_\_\_\_\_

**IMPORTANT Tire Owner** – Keep this page as part of your limited warranty claim. (invoice) must be submitted to an authorized American Road Star Tire Dealer

1. The information on this page must be completed to validate any limited warranty claim.
2. In the event of a limited warranty claim, this information and proof of purchase (copy of invoice) must be submitted to an authorized American Road Star Tire Dealer.

### MILEAGE WARRANTY ADJUSTMENT TABLE

Percent WTD pays per original warranty mileage on American Road Star Tires\*

Mileage up to	30,000	40,000	50,000	Mileage up to	30,000	40,000	50,000
1000	97%	98%	98%	26000	13%	35%	48%
2000	93%	95%	96%	27000	10%	33%	46%
3000	90%	93%	94%	28000	7%	30%	44%
4000	87%	90%	92%	29000	3%	28%	42%
5000	83%	88%	90%	30000	0%	25%	40%
6000	80%	85%	88%	31000		23%	38%
7000	77%	83%	86%	32000		20%	36%
8000	73%	80%	84%	33000		18%	34%
9000	70%	78%	82%	34000		15%	32%
10000	67%	75%	80%	35000		13%	30%
11000	63%	73%	78%	36000		10%	28%
12000	60%	70%	76%	37000		8%	26%
13000	57%	68%	74%	38000		5%	24%
14000	53%	65%	72%	39000		3%	22%
15000	50%	63%	70%	40000		0%	20%
16000	47%	60%	68%	41000			18%
17000	43%	58%	66%	42000			16%
18000	40%	55%	64%	43000			14%
19000	37%	53%	62%	44000			12%
20000	33%	50%	60%	45000			10%
21000	30%	48%	58%	46000			8%
22000	27%	45%	56%	47000			6%
23000	23%	43%	54%	48000			4%
24000	20%	40%	52%	49000			2%
25000	17%	38%	50%	50000			0%



### SUMMARY OF LIMITED TIRE WARRANTY COVERAGE BY AMERICAN ROAD STAR TREAD PATTERN

Pattern / Product Name	Tread Wear/Mileage Warranty	Road Hazard Replacement Warranty	First Year / First 2/32nds	Second Year & Within the First 50% of Tread Depth
ProA/S - All Rim Diameters	50,000 Miles	Yes	Free	Prorated
Sport A/S - 15,16 & 17" Rim Diameters	50,000 Miles	Yes	Free	Prorated
Sport A/S - 18,19,20,22 & 24" Rim Diameters	40,000 Miles	Yes	Free	Prorated
HP A/S - All Rim Diameters	40,000 Miles	Yes	Free	Prorated
H/T - SUV only	50,000 Miles	Yes	Free	Prorated
VAN A/S	N/A	N/A	N/A	N/A
All Terrain A/T	50,000 Miles	Yes	Free	Prorated
Mud Terrain M/T	N/A	N/A	N/A	N/A
Rugged Terrain R/T	N/A	N/A	N/A	N/A

\*\* LT Metric Sizes are not included in this Limited Mileage and Road Hazard Warranty.

\*\* Eligible tires for this warranty must meet the vehicle specifications of the original size applied by the Original Equipment Manufacturer

NOTE: In the event of a warranty claim, this page must be attached to the American Road Star standard claim form.



## AMERICAN ROAD STAR COMMERCIAL TIRE LIMITED WARRANTY

This warranty applies only to tires purchased in the United State on or after October 01, 2018

This Limited Warranty Policy provides for tire replacement under certain specified conditions. This policy applies to all AMERICAN ROADSTAR Radial Truck tires used in normal highway service displaying warrant able conditions. There is no warranty for tires that wear out, fail or become unserviceable because of neglect or mistreatment. It is essential that you adhere to all standard safety and maintenance practices and that you carefully read the terms and conditions defined in this Warranty. Wholesale Tire Distributors hereby warrants that every new AMERICAN ROAD STAR Radial Truck tire is free from defects in workmanship and material for the life of the original tread of the new tire less 2/32". The life of the original usable tread ends when the tire has worn down with only 2/32" remaining. Once the tread is worn down to the top of the built-in "wear indicators" in the tread grooves molded at 2/32", the tire is considered fully worn out regardless of its age or mileage. This warranty applies to AMERICAN ROAD STAR Radial Truck tires purchased through an authorized dealer of Wholesale Tire Distributors (WTD)

### RECOMMENDED SAFETY PRACTICES

Serious injury or property damage may result from:

- TIRE FAILURE DUE TO UNDERINFLATION, OVERINFLATION and/or OVERLOADING
- Not following the owner's manual or tire placard in vehicle
- TIRE FAILURE DUE TO EXCESSIVE HIGH SPEED. Follow the owner's manual or tire placard in vehicle.
- EXPLOSION OF TIRE /RIM ASSEMBLY DUE TO IMPROPER MOUNTING. Only specially trained people should mount tires.
- FAILURE TO MOUNT RADIAL TIRES ON APPROVED RIMS.
- FAILURE TO DEFLATE SINGLE OR DUAL ASSEMBLIES COMPLETELY BEFORE DISMOUNTING.
- TIRE SPINNING. On slippery surfaces such as rain, snow, mud, ice etc. do not spin tires as personal injury and severe damage may result from excessive wheel spinning, including tire disintegration or axle damage.

### WARRANTY ELIGIBILITY

This policy applies to the original equipment and aftermarket consumer/owner, or user of any new AMERICAN ROAD STAR radial truck tire sold through an authorized dealer of Wholesale Tire Distributors. Eligible tires must bear the AMERICAN ROAD STAR brand name, a complete D.O.T. serial identification number, NOT be branded as Non-Adjustable (NA) and operated in normal highway service. Eligible tires must be on the vehicle on which they were originally installed, in conformance with the vehicle manufacturer's recommendations. These tires are covered by this warranty for the life of the original usable tread depth (the original tread depth down to the level of treadwear indicators molded at 2/32 inch) within 72 months from the date of purchase (proof of purchase required). If proof of purchase is not available, the coverage will be 72 months from the date of manufacture.

### NO CHARGE ADJUSTMENT

If a defect in workmanship and materials is found in any AMERICAN ROAD STAR Radial Truck tire within the first 50% of the original usable tread (original tread depth, less 2/32", divided by 2), Wholesale Tire Distributors will replace such tire with a comparable new tire. Mounting and balancing services up to \$16.00/tire are covered in the form of a credit on the replacement tire invoice. Other applicable taxes and fees for the comparable new AMERICAN ROAD STAR tire are payable by the owner.

### PRORATED ADJUSTMENT

If a defect in workmanship and materials is found in any AMERICAN ROAD STAR Radial Truck tire after the first 50% of the original usable tread, a credit will be given toward the purchase of a comparable new AMERICAN ROAD STAR tire; pro-rated based on the usable tread depth remaining on the returned tire versus the original tread of the new tire. Applicable taxes and amount equal to the full current Federal Excise Tax (FET) on the new tire and costs of mounting and balancing services will be borne by the owner. Adjustments on out-of-balance or out-of-round tires are allowed only during the first 2/32" or 10% of the original tread.

### EXCLUSIONS

- A. All AMERICAN ROAD STAR warranties are limited to the original purchaser and the original vehicle on which they are mounted. Warranties are not assignable to subsequent purchasers or vehicles.
- B. This limited warranty is valid only in the United States. Any tire used or equipped on a vehicle registered or regularly operated outside the United States is not covered by this warranty.
- C. The following is not covered by the Limited Warranty:
  - a. Tire branded or marked "Non-Adjustable" (N/A) or "Blemished" (Blem), or previously adjusted.
  - b. Failure, damage or irregular wear due to:
    - Road hazards (i.e., puncture, cut, snag, impact breaks, etc.), wreck or collision.
    - Fire, accident or vandalism.
    - Mechanical condition of vehicle, including misalignment, wheel imbalance, faulty shocks or brakes.
    - Misapplication of tire, use of improper inner tube.
    - Alteration of the tire or addition of alien material or transfer from one vehicle to another.
    - Faulty retreading or repairing procedures or materials used in the retreading process.
  - c. Cost of mounting and balancing services except as noted.
  - d. Loss of time or use, inconvenience, or any incidental or consequential damages.
  - e. Tires operated at speeds that exceed posted limits, and tires used in racing or competition.
  - f. Tires used in non-standard applications.
  - g. Tires designed for highway use operated in off-road conditions.
  - h. Tires that are improperly repaired including, but not limited to; sidewall modification by addition or removal of material, tubeless tires into which anything other than air has been introduced including foam, dry or liquid balancers and sealants.
  - i. Tire/tube failure and air loss that has resulted from tube manufacturing deficiencies, tube deterioration, tire under/over inflation, improper tube and flap assembly, mounting tool damage, use of wrong size tube or a used tube, a bias tube in a radial application, applying an incompatible mounting lubricant, foreign objects contacting tube assembly.
  - j. Wholesale Tire Distributors does not warrant tubes, tube fitment, tube usage or the consequences thereof unless supplied by Wholesale Tire Distributor with the tire as a set.
  - k. Tires subjected to vehicle suspension deficiencies, wheels misalignment, improperly maintained balance of inflation
  - l. Tires submitted for ride disturbance complaints after the first two thirty-seconds of an inch (2/32") new tread wear.
  - m. Tires with the Department of Transportation (DOT) number removed.
  - n. Tires worn past the last two thirty-seconds of an inch (2/32") of original tread depth.
  - o. Ozone cracking or weather checking on tires submitted more than four years (4) after the date of manufacture.
    - a. Tires rendered not retreadable or unserviceable due to faulty or improper retreading. Improper retreading includes buffing to the cord surface, insufficient vulcanization, improper repair and failure of the bonding agent.
    - b. Wholesale Tire Distributor Tire does not warrant inspection for retread ability, the retread process, design, workmanship or materials.

### CASING POLICY

a. Casings of AMERICAN ROAD STAR radial truck tires are warranted against defects in workmanship and material throughout the first and second retread (see c, below for age restrictions). Defects in workmanship and material found in the process of buffing for retread are warrant able. The number of retreads must be clearly identified on the casing sidewall.

b. If an examination shows that a casing of an AMERICAN ROAD STAR radial truck tire failed due to a defect in workmanship or material, Wholesale Tire Distributors will give a credit towards the purchase price of a comparable new AMERICAN ROAD STAR tire based on the values listed below:

SIZE	CASING VALUE (US\$)	SIZE	CASING VALUE (US\$)
215/75R17.5	\$20	295/75R22.5	\$65
235/75R17.5	\$20	11R24.5	\$65
255/70R22.5	\$55	285/75R24.5	\$65
275/70R22.5	\$55	12R22.5	\$65
225/70R19.5	\$25	315/80R22.5	\$65
245/70R19.5	\$25	385/65R22.5	\$75
10R22.5	\$45	425/65R22.5	\$80
11R22.5	\$65	445/50R22.5	\$80

c. Above casing warranty valid only for first six (6) years after date of manufacture of original tire for all casings. Casing value is reduced by 50% of the above values after the first retread.

### OWNERS' OBLIGATIONS

In order to be eligible for AMERICAN ROAD STAR Limited Warranty service, the owner must:

- Present the defective tire to an authorized AMERICAN ROAD STAR dealer.
- Present proof of purchase to the satisfaction of the dealer.
- Pay the amount due on a new tire, less the amount of credit, including taxes, mounting and balancing charges (except as noted) or cost of other services ordered.
- Ensure proper tire maintenance, inflation pressures & loading practices in accordance with vehicle and applicable tire guides, as well as lawful operation of vehicles and adherence to government regulations. Wholesale Tire Distributors offers a guide to maintenance and care of AMERICAN ROAD STAR tires in the form of a section entitled, "Safety Practices" (above). It is strongly recommended that these guidelines be read.

### LEGAL RIGHTS

To the extent permitted by law, Wholesale Tire Distributors and its servicing agents shall not be held responsible for any of the following:

- Commercial Loss.
- Damage to or loss of property other than the tire itself.
- Incidental, indirect, special or consequential damages arising from any cause whatsoever, including negligence.

Some states do not allow the exclusion or limitation of incidental or consequential damages, so the above limitation or exclusions may not apply to you. No representative or dealer has authority to make any representation, promise, or agreement on behalf of Wholesale Tire Distributors except as stated herein. Any tire, no matter how well constructed, may fail in service or otherwise become unserviceable due to conditions beyond the control of the manufacturer. Under no circumstances is this representation that a tire failure cannot occur. This warranty gives you specific legal rights, and you may also have other rights that vary from state to state. This limited warranty is applicable only in the United States. No implied or express warranties are extended beyond the time when the tire has delivered its original tread life, except for the express warranties set forth in this "Limited Warranty". All warranties, promises and agreements, express or implied, merchantability or otherwise, are excluded to the extent permitted by law.

### DISCLAIMER

This warranty, or any warranty stored or referenced to herein, is exclusive and in lieu of any other warranty regarding the quality of AMERICAN ROAD STAR tires whether expressed or implied, and remedies for breach thereof shall be limited to those specifically provided herein.



AMERICAN ROADSTAR TIRES



SPORT A/S



HP A/S



PRO A/S



H/T



ARS 1000



ARS 2000



ARS 3000



VAN



A/T



M/T



R/T



ARS 4000



ARS 5000




ARS 6000



# **AMERICAN ROAD STAR TIRES**



 2875 POMONA BLVD POMONA, CA 91768

 1 (562)-340-6252

 INFO @ AmericanRoadstar.COM

 WWW.AMERICANROADSTAR.COM

 @americanroadstartires